

ESRRB Polyclonal Antibody

catalog number: **E-AB-67986**

Note: Centrifuge before opening to ensure complete recovery of vial contents.

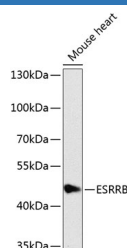
Description

Reactivity	Mouse
Immunogen	Recombinant fusion protein of human ESRRB (NP_004443.3).
Host	Rabbit
Isotype	IgG
Purification	Affinity purification
Buffer	Phosphate buffered solution, pH 7.4, containing 0.05% stabilizer and 50% glycerol.

Applications

Applications	Recommended Dilution
WB	1:500-1:2000

Data



Western blot analysis of extracts of Mouse heart using
ESRRB Polyclonal Antibody at dilution of 1:1000.

Observed-MW:50 kDa

Calculated-MW:48 kDa/55 kDa/56 kDa

Preparation & Storage

Storage	Store at -20°C Valid for 12 months. Avoid freeze / thaw cycles.
Shipping	The product is shipped with ice pack, upon receipt, store it immediately at the temperature recommended.

Background

This gene encodes a protein with similarity to the estrogen receptor. Its function is unknown; however, a similar protein in mouse plays an essential role in placental development.

For Research Use Only