

Recombinant CD3e/CD3 epsilon Monoclonal Antibody

catalog number: **AN300022P**

Note: Centrifuge before opening to ensure complete recovery of vial contents.

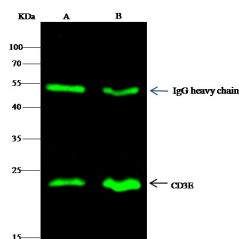
Description

Reactivity	Human
Immunogen	Recombinant Human CD3e / CD3 epsilon Protein
Host	Rabbit
Isotype	IgG
Clone	A1132
Purification	Protein A
Buffer	0.2 µm filtered solution in PBS

Applications Recommended Dilution

WB	1:500-1:2000
IP	1-4 µL/mg of lysate

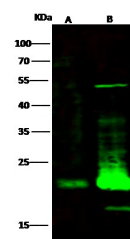
Data



Immunoprecipitation analysis using 2 µL anti-CD3E Monoclonal Antibody and 15 µl of 50 % Protein G agarose. Western blot was performed from the immunoprecipitate using CD3E Monoclonal Antibody at a dilution of 1:100. Lane A: 0.5 mg Jurkat Whole Cell Lysate, Lane B: 0.5 mg HuT78 Whole Cell Lysate

Observed-MW: 23 kDa

Calculated-MW: 23 kDa



Western Blot with CD3e / CD3 epsilon Monoclonal Antibody at dilution of 1:500. Lane A: Hu-T78 Whole Cell Lysate, Lane B: Jurkat Whole Cell Lysate Lysates/proteins at 30 µg per lane.

Observed-MW: 23 kDa

Calculated-MW: 23 kDa

Preparation & Storage

Storage	This antibody can be stored at 2°C-8°C for one month without detectable loss of activity. Antibody products are stable for twelve months from date of receipt when stored at -20°C to -80°C. Preservative-Free. Avoid repeated freeze-thaw cycles.
Shipping	Ice bag

Background

CD3 epsilon is one of at least four invariant proteins that associate with the variable antigen recognition chains of the T cell receptor and function in signal transduction.

For Research Use Only