

Recombinant Mouse SerpinF2/SERPINF2 Protein (Fc Tag)



Catalog Number: PKSM041142

Note: Centrifuge before opening to ensure complete recovery of vial contents.

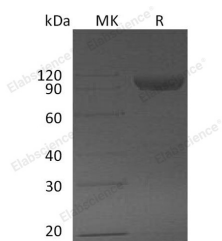
Description

Synonyms	Alpha-2-antiplasmin; Alpha-2-AP; Alpha-2-plasmin inhibitor; Alpha-2-PI; Serpin F2; Serpinf2
Species	Mouse
Expression Host	HEK293 Cells
Sequence	Val28-Lys491
Accession	Q61247
Calculated Molecular Weight	79.3 kDa
Observed molecular weight	90-120 kDa
Tag	C-Fc

Properties

Purity	> 95 % as determined by reducing SDS-PAGE.
Endotoxin	< 1.0 EU per µg of the protein as determined by the LAL method.
Storage	Store at < -20°C, stable for 6 months. Please minimize freeze-thaw cycles.
Shipping	This product is provided as liquid. It is shipped at frozen temperature with blue ice/gel packs. Upon receipt, store it immediately at < -20°C.
Formulation	Supplied as a 0.2 µm filtered solution of 20mM Tris-HCl, 150mM NaCl, 20% Glycerol, pH 8.0.
Reconstitution	Not Applicable

Data



> 95 % as determined by reducing SDS-PAGE.

Background

Alpha-2-antiplasmin, also called Serpin F2, is a serine protease inhibitor (serpin) responsible for inactivating plasmin, and an important enzyme participates in fibrinolysis and degradation of other proteins. In liver cirrhosis, there is decreased production of alpha 2-antiplasmin, leading to decreased inactivation of plasmin and an increase in fibrinolysis. Serpin F2 is major expressed on liver and kidney. Some other tissues such as muscle, intestine, central nervous system, and placenta also express Serpin F2 mRNA at a moderate level indicated that it is a key regulator of plasmin-mediated proteolysis in these tissues.

For Research Use Only

A Reliable Research Partner in Life Science and Medicine

Toll-free: 1-888-852-8623

Web: www.elabscience.com

Tel: 1-832-243-6086

Email: techsupport@elabscience.com

Fax: 1-832-243-6017