

ITLN1 Polyclonal Antibody

catalog number: **E-AB-68401**

Note: Centrifuge before opening to ensure complete recovery of vial contents.

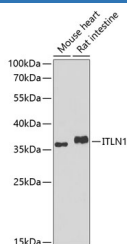
Description

Reactivity	Mouse;Rat
Immunogen	Recombinant fusion protein of human ITLN1
Host	Rabbit
Isotype	IgG
Purification	Affinity purification
Buffer	Phosphate buffered solution, pH 7.4, containing 0.05% stabilizer and 50% glycerol.

Applications

Applications	Recommended Dilution
WB	1:500-1:2000
IHC	1:50-1:200
IF	1:50-1:200

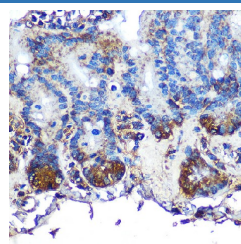
Data



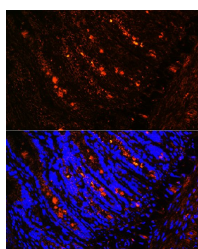
Western blot analysis of extracts of various cell lines using ITLN1 Polyclonal Antibody at 1:1000 dilution.

Observed-MW:37 kDa

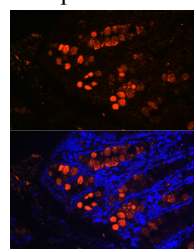
Calculated-MW:34 kDa



Immunohistochemistry of paraffin-embedded mouse intestine using ITLN1 Polyclonal Antibody at dilution of 1:100 (40x lens). Perform microwave antigen retrieval with 10 mM PBS buffer pH 7.2 before commencing with IHC staining protocol.



Immunofluorescence analysis of rat intestine using ITLN1 Polyclonal antibody at dilution of 1:100 (40x lens). Blue: DAPI for nuclear staining.



Immunofluorescence analysis of mouse colon using ITLN1 Polyclonal antibody at dilution of 1:100 (40x lens). Blue: DAPI for nuclear staining.

Preparation & Storage

Storage	Store at -20°C Valid for 12 months. Avoid freeze / thaw cycles.
Shipping	The product is shipped with ice pack, upon receipt, store it immediately at the temperature recommended.

Background

For Research Use Only

Intelectin-1(ITLN1) is a secreted protein and contains 1 fibrinogen C-terminal domain. Intelectin-1 is a 40 kDaCa-dependent galactofuranose-binding lectin that is not a C-type lectin. It is expressed on multiple cell typesand appears to participate in insulin signaling and microbe recognition. The protein has no effect on basalglucose uptake but enhances insulin-stimulated glucose uptake in adipocytes. It increases AKT phosphorylationin the absence and presence of insulin and it may play a role in the defense systemagainst microorganisms. Italso may specifically recognize carbohydrate chains of pathogens and bacterial components containinggalactofuranosy l residues, in a calcium-dependent manner.

For Research Use Only

Toll-free: 1-888-852-8623
Web:www.elabscience.com

Tel: 1-832-243-6086
Email:techsupport@elabscience.com

Fax: 1-832-243-6017

Rev. V1.7