

## Recombinant Mouse KYNU/Kynureninase Protein (His Tag)

**Catalog Number:** PKSM040748

**Note:** Centrifuge before opening to ensure complete recovery of vial contents.

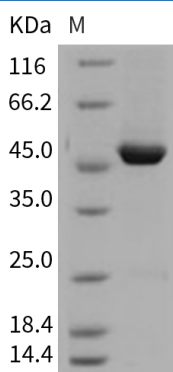
### Description

<b>Species</b>	Mouse
<b>Source</b>	Baculovirus-Insect Cells-derived Mouse KYNU/Kynureninase protein Met 1-Ser 464, with an C-terminal His
<b>Calculated MW</b>	53.7 kDa
<b>Observed MW</b>	47 kDa
<b>Accession</b>	Q9CXF0
<b>Bio-activity</b>	Measured by its ability to oxidize 3-hydroxykynurenine. The specific activity is > 100 pmoles/min/μg.

### Properties

<b>Purity</b>	> 94 % as determined by reducing SDS-PAGE.
<b>Endotoxin</b>	< 1.0 EU per μg of the protein as determined by the LAL method.
<b>Storage</b>	Generally, lyophilized proteins are stable for up to 12 months when stored at -20 to -80 °C. Reconstituted protein solution can be stored at 4-8°C for 2-7 days. Aliquots of reconstituted samples are stable at < -20°C for 3 months.
<b>Shipping</b>	This product is provided as lyophilized powder which is shipped with ice packs.
<b>Formulation</b>	Lyophilized from sterile 20mM Tris, 500mM NaCl, 10% glycerol, pH 8.0 Normally 5% - 8% trehalose, mannitol and 0.01% Tween 80 are added as protectants before lyophilization. Please refer to the specific buffer information in the printed manual.
<b>Reconstitution</b>	Please refer to the printed manual for detailed information.

### Data



> 94 % as determined by reducing SDS-PAGE.

### Background

Genetic studies in mouse and human suggest that kynureninase activity may influence blood pressure and renal function. The gene coding kynureninase (KYNU) is also located on chromosome band 2q14-q23, where a linkage peak for essential hypertension was previously detected in the Chinese Han population. The results show that the rare KYNU variant Arg188Gln affects kynureninase activity and are consistent with the hypothesis that this mutation can predispose to essential hypertension.

### For Research Use Only