

Recombinant Rat MCP-1 Protein(Sumo Tag)

Catalog Number: PDER100114

Note: Centrifuge before opening to ensure complete recovery of vial contents.

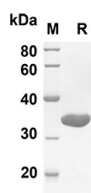
Description

Species	Rat
Source	E.coli-derived Rat MCP-1 protein Gln24-Asn148, with an N-terminal Sumo
Calculated MW	26.6 kDa
Observed MW	35 kDa
Accession	P14844
Bio-activity	Not validated for activity

Properties

Purity	> 90% as determined by reducing SDS-PAGE.
Endotoxin	< 10 EU/mg of the protein as determined by the LAL method
Storage	Generally, lyophilized proteins are stable for up to 12 months when stored at -20 to -80 °C. Reconstituted protein solution can be stored at 4-8°C for 2-7 days. Aliquots of reconstituted samples are stable at < -20°C for 3 months.
Shipping	This product is provided as lyophilized powder which is shipped with ice packs.
Formulation	Lyophilized from a 0.2 µm filtered solution in PBS with 5% Trehalose and 5% Mannitol.
Reconstitution	It is recommended that sterile water be added to the vial to prepare a stock solution of 0.5 mg/mL. Concentration is measured by UV-Vis.

Data



SDS-PAGE analysis of Rat MCP-1 proteins, 2 µg/lane of Recombinant Rat MCP-1 proteins was resolved with an SDS-PAGE under reducing conditions, showing bands at 26.6 KD

Background

CCL2/JE/MCP-1, is a chemokine that binds the receptor CCR2 and induces the chemoattraction of mononuclear cells. It induces the activation of monocytes, NK cells, lymphocytes, and basophils. Additionally, CCL2 promotes Th2 polarization in CD4+ T cells, and CCL2-mediated recruitment of monocytes to sites of inflammation contributes to disease severity in atherosclerosis, multiple sclerosis, and allergic asthma. Endogenous proteolytic trimming of CCL2 at the N-terminus, including the N-terminal pyrrolidone carboxylic acid-modified glutamine, downregulates activity but not receptor binding.

For Research Use Only

Toll-free: 1-888-852-8623
Web: www.elabscience.com

Tel: 1-832-243-6086
Email: techsupport@elabscience.com

Fax: 1-832-243-6017