

CD284 Polyclonal Antibody

catalog number: E-AB-70079

Note: Centrifuge before opening to ensure complete recovery of vial contents.

Description

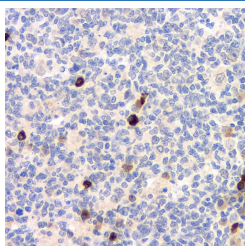
Reactivity	Human; Rat
Immunogen	KLH conjugated Synthetic peptide corresponding to Mouse TLR4
Host	Rabbit
Isotype	IgG
Purification	Affinity purification
Buffer	Phosphate buffered solution, pH 7.4, containing 0.05% stabilizer, 1% protein protectant and 50% glycerol.

Applications

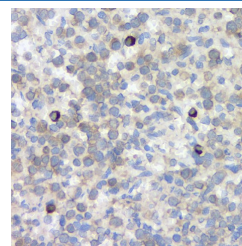
Recommended Dilution

IHC	1:200-1:800
------------	-------------

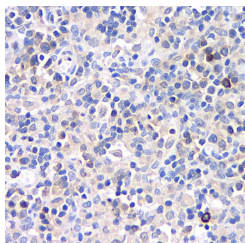
Data



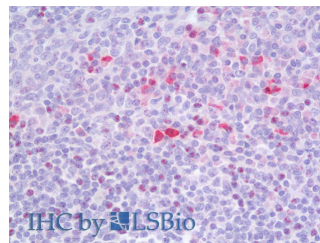
Immunohistochemistry analysis of paraffin-embedded human tonsil using CD284 Polyclonal Antibody at dilution of 1:500.



Immunohistochemistry analysis of paraffin-embedded rat spleen using CD284 Polyclonal Antibody at dilution of 1:500.



Immunohistochemistry analysis of paraffin-embedded rat lymph node using CD284 Polyclonal Antibody at dilution of 1:500.



Immunohistochemistry analysis of paraffin-embedded Human Tonsil using CD284 Polyclonal Antibody(Elabscience Product Detected by Lifespan).

Preparation & Storage

Storage	Store at -20°C Valid for 12 months. Avoid freeze / thaw cycles.
Shipping	The product is shipped with ice pack, upon receipt, store it immediately at the temperature recommended.

Background

TLR4, also named as CD284, belongs to the Toll-like receptor family. TLR4 cooperates with LY96 and CD14 to mediate the innate immune response to bacterial lipopolysaccharide (LPS). TLR4 acts via MYD88, TIRAP and TRAF6, leading to NF-kappa-B activation, cytokine secretion and the inflammatory response. Three alternatively spliced transcript variants that encode different protein isoforms have been described.

For Research Use Only