

TMED10 Polyclonal Antibody

catalog number: E-AB-19178

Note: Centrifuge before opening to ensure complete recovery of vial contents.

Description

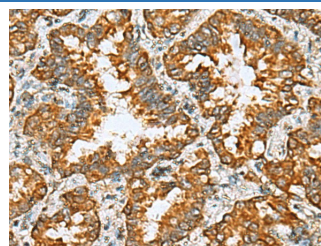
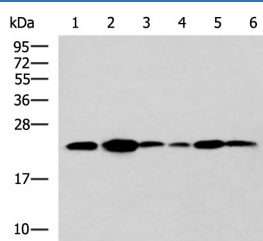
Reactivity	Human;Mouse;Rat
Immunogen	Fusion protein of human TMED10
Host	Rabbit
Isotype	IgG
Purification	Antigen affinity purification
Conjugation	Unconjugated
buffer	Phosphate buffered solution, pH 7.4, containing 0.05% stabilizer and 50% glycerol.

Applications

Recommended Dilution

WB	1:1000-1:5000
IHC	1:50-1:200

Data

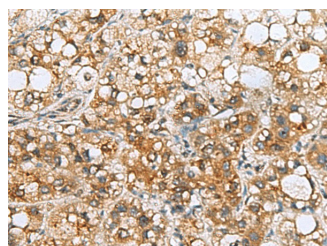


Western blot analysis of NIH/3T3 cell Mouse Pancreas tissue
Rat lung tissue Mouse liver tissue HeLa Raji cell lysates using
TMED10 Polyclonal Antibody at dilution of 1:900

Immunohistochemistry of paraffin-embedded Human lung
cancer tissue using TMED10 Polyclonal Antibody at
dilution of 1:65(×200)

Observed-MV:Refer to figures

Calculated-MV:25 kDa



Immunohistochemistry of paraffin-embedded Human liver
cancer tissue using TMED10 Polyclonal Antibody at dilution
of 1:65(×200)

Preparation & Storage

Storage	Store at -20°C Valid for 12 months. Avoid freeze / thaw cycles.
Shipping	The product is shipped with ice pack,upon receipt,store it immediately at the temperature recommended.

Background

For Research Use Only

TMED10 Polyclonal Antibody

catalog number: E-AB-19178



This gene is a member of the EMP24/GP25L/p24 family and encodes a protein with a GOLD domain. This type I membrane protein is localized to the plasma membrane and golgi cisternae and is involved in vesicular protein trafficking. The protein is also a member of a heteromeric secretase complex and regulates the complex's gamma-secretase activity without affecting its epsilon-secretase activity. Mutations in this gene have been associated with early-onset familial Alzheimer's disease. This gene has a pseudogene on chromosome 8.

For Research Use Only

A Reliable Research Partner in Life Science and Medicine
Tel: 400-999-2100

Email: techsupport@elabscience.cn

Web: www.elabscience.cn

Rev. V2.7