

SMEK1 Polyclonal Antibody

catalog number: E-AB-62484

Note: Centrifuge before opening to ensure complete recovery of vial contents.

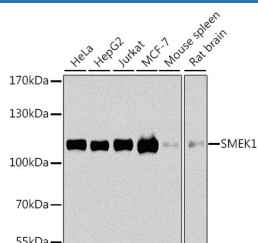
Description

Reactivity	Human;Mouse;Rat
Immunogen	Recombinant fusion protein of human SMEK1 (NP_001271210.1).
Host	Rabbit
Isotype	IgG
Purification	Affinity purification
Buffer	Phosphate buffered solution, pH 7.4, containing 0.05% stabilizer and 50% glycerol.

Applications

Applications	Recommended Dilution
WB	1:500-1:2000
IHC	1:50-1:100

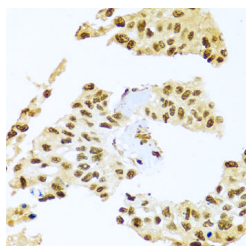
Data



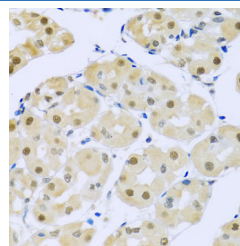
Western blot analysis of extracts of various cell lines using SMEK1 Polyclonal Antibody at dilution of 1:1000.

Observed-MV:110 kDa

Calculated-MV:62 kDa/67 kDa/93 kDa/95 kDa



Immunohistochemistry of paraffin-embedded Human lung cancer using SMEK1 Polyclonal Antibody at dilution of 1:100 (40x lens).



Immunohistochemistry of paraffin-embedded Human stomach using SMEK1 Polyclonal Antibody at dilution of 1:100 (40x lens).

Preparation & Storage

Storage	Store at -20°C Valid for 12 months. Avoid freeze / thaw cycles.
Shipping	The product is shipped with ice pack, upon receipt, store it immediately at the temperature recommended.

Background

PPP4R3A (Protein Phosphatase 4 Regulatory Subunit 3A) is a Protein Coding gene. Among its related pathways are Glucagon signaling pathway and Integrated Breast Cancer Pathway. An important paralog of this gene is PPP4R3B.

For Research Use Only