

Elab Fluor® Violet 610 Anti-Human CD11b Antibody[ICRF44]

Catalog Number: E-AB-F1146T

Note: Centrifuge before opening to ensure complete recovery of vial contents.

Description

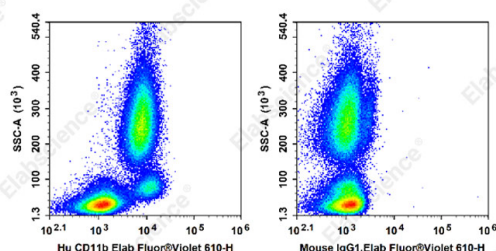
Reactivity	Human
Host	Mouse
Isotype	Mouse IgG1, κ
Clone No.	ICRF44
Isotype Control	Elab Fluor® Violet 610 Mouse IgG1, κ Isotype Control[MOPC-21] [Product E-AB-F09792T]
Conjugation	Elab Fluor® Violet 610
Conjugation Information	Elab Fluor® Violet 610 is designed to be excited by the violet laser (405 nm) and detected using an optical filter centered near 613 nm (e.g., a 615/20 nm bandpass filter).
Storage Buffer	Phosphate buffered solution, pH 7.2, containing 0.09% sodium azide and 1% BSA.

Applications

Recommended usage

FCM	Each lot of this antibody is quality control tested by flow cytometric analysis. The amount of the reagent is suggested to be used 5 μL of antibody per test (million cells in 100 μL staining volume or per 100 μL of whole blood). Please check your vial before the experiment. Since applications vary, the appropriate dilutions must be determined for individual use.
------------	---

Data



Staining of normal human peripheral blood cells with Elab Fluor® Violet 610 Anti-Human CD11b Antibody[ICRF44](left) or Elab Fluor® 610 Mouse IgG1, κ Isotype Control (right). Cells in the leucocytes gate were used for analysis.

Preparation & Storage

Storage	Keep as concentrated solution. This product can be stored at 2-8°C for 12 months. Please protected from prolonged exposure to light and do not freeze.
Shipping	Ice bag

Antigen Information

Alternate Names	CD11 antigen-like family member B;CD11b;CR-3 alpha chain;Integrin alpha-M;Itgam; Leukocyte adhesion receptor MO1
Uniprot ID	P11215
Gene ID	3684

For Research Use Only

