

## SLC2A2 Polyclonal Antibody

**catalog number: E-AB-12475**

**Note:** Centrifuge before opening to ensure complete recovery of vial contents.

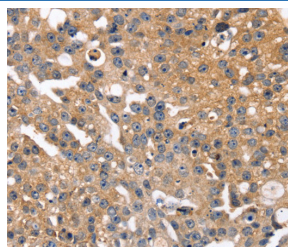
### Description

<b>Reactivity</b>	Human
<b>Immunogen</b>	Synthetic peptide of human SLC2A2
<b>Host</b>	Rabbit
<b>Isotype</b>	IgG
<b>Purification</b>	Affinity purification
<b>Buffer</b>	Phosphate buffered solution, pH 7.4, containing 0.05% stabilizer and 50% glycerol.

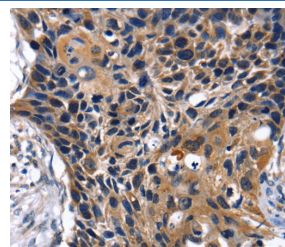
### Applications Recommended Dilution

<b>IHC</b>	1:25-1:100
------------	------------

### Data



Immunohistochemistry of paraffin-embedded Human breast cancer tissue using SLC2A2 Polyclonal Antibody at dilution 1:35



Immunohistochemistry of paraffin-embedded Human esophagus cancer tissue using SLC2A2 Polyclonal Antibody at dilution 1:35

### Preparation & Storage

<b>Storage</b>	Store at -20°C Valid for 12 months. Avoid freeze / thaw cycles.
<b>Shipping</b>	The product is shipped with ice pack, upon receipt, store it immediately at the temperature recommended.

### Background

This gene encodes an integral plasma membrane glycoprotein of the liver, islet beta cells, intestine, and kidney epithelium. The encoded protein mediates facilitated bidirectional glucose transport. Because of its low affinity for glucose, it has been suggested as a glucose sensor. Mutations in this gene are associated with susceptibility to diseases, including Fanconi-Bickel syndrome and noninsulin-dependent diabetes mellitus (NIDDM). Alternative splicing results in multiple transcript variants of this gene.

### For Research Use Only