

ST14 Polyclonal Antibody

catalog number: D-AB-10208L

Note: Centrifuge before opening to ensure complete recovery of vial contents.

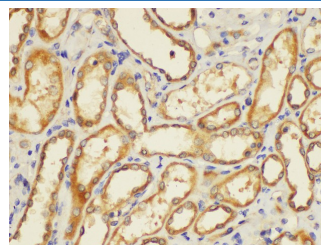
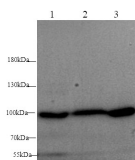
Description

| | |
|---------------------|--|
| Reactivity | Mouse;Rat |
| Immunogen | Recombinant Human ST14 protein expressed by E.coli |
| Host | Rabbit |
| Isotype | IgG |
| Purification | Antigen Affinity Purification |
| Buffer | PBS with 0.05% proclin 300, 1% protective protein and 50% glycerol,pH7.4 |

Applications

| | |
|-----------|------------|
| WB | 1:500-1000 |
|-----------|------------|

Data



Western blot with ST14 Polyclonal antibody at dilution of 1:1000. lane 1: Mouse Kidney, lane 2: Mouse breast, lane 3: Rat Kidney

Immunohistochemistry of paraffin-embedded Human kidney using ST14 Polyclonal Antibody at dilution of 1:200.

Observed-MV: 95-105kDa
Calculated-MV: 95 kDa

Preparation & Storage

| | |
|-----------------|--|
| Storage | Store at -20°C Valid for 12 months. Avoid freeze / thaw cycles. |
| Shipping | The product is shipped with ice pack, upon receipt, store it immediately at the temperature recommended. |

Background

The protein encoded by this gene is an epithelial-derived, integral membrane serine protease. This protease forms a complex with the Kunitz-type serine protease inhibitor, HAI-1, and is found to be activated by sphingosine 1-phosphate. This protease has been shown to cleave and activate hepatocyte growth factor/scattering factor, and urokinase plasminogen activator, which suggest the function of this protease as an epithelial membrane activator for other proteases and latent growth factors.

For Research Use Only