

Recombinant Human CXADR/CAR Protein (His Tag)

Catalog Number: PKSH032284

Note: Centrifuge before opening to ensure complete recovery of vial contents.

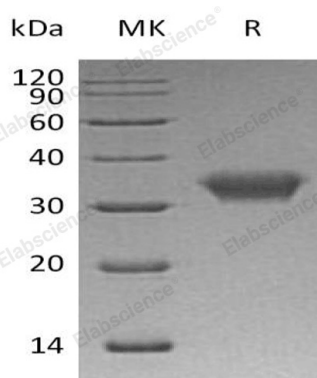
Description

Species	Human
Source	HEK293 Cells-derived Human CXADR;CAR protein Leu20-Gly237, with an C-terminal His
Calculated MW	25.1 kDa
Observed MW	32 kDa
Accession	P78310
Bio-activity	Not validated for activity

Properties

Purity	> 95 % as determined by reducing SDS-PAGE.
Endotoxin	< 1.0 EU per µg of the protein as determined by the LAL method.
Storage	Generally, lyophilized proteins are stable for up to 12 months when stored at -20 to -80 °C. Reconstituted protein solution can be stored at 4-8°C for 2-7 days. Aliquots of reconstituted samples are stable at < -20°C for 3 months.
Shipping	This product is provided as lyophilized powder which is shipped with ice packs.
Formulation	Lyophilized from a 0.2 µm filtered solution of 20mM PB, 150mM NaCl, pH 7.2. Normally 5% - 8% trehalose, mannitol and 0.01% Tween 80 are added as protectants before lyophilization.
	Please refer to the specific buffer information in the printed manual.
Reconstitution	Please refer to the printed manual for detailed information.

Data



> 95 % as determined by reducing SDS-PAGE.

Background

Coxsackievirus and Adenovirus Receptor (CAR) belongs to the CTX family of the Ig superfamily. CXADR is a type I transmembrane glycoprotein and expressed in pancreas, brain, heart, small intestine, testis, prostate. It is a receptor that mediates gene transfer and also act as an adhesion molecule within junctional complexes, notably between epithelial cells lining body cavities and within myocardial intercalated discs. CXADR contains an extracellular domain, a transmembrane helix and a C-terminal intracellular domain. The C-terminal interacts with few cytoplasmic junctional proteins, microtubules and the actin cytoskeleton.

For Research Use Only

Toll-free: 1-888-852-8623
Web: www.elabscience.com

Tel: 1-832-243-6086
Email: techsupport@elabscience.com

Fax: 1-832-243-6017