

CD16b/FCGR3B Monoclonal Antibody

catalog number: AN200200P

Note: Centrifuge before opening to ensure complete recovery of vial contents.

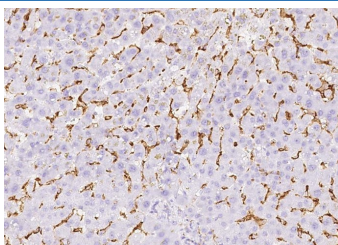
Description

Reactivity	Human
Immunogen	Recombinant Human CD16b/FCGR3B Protein
Host	Mouse
Isotype	IgG1
Clone	11A3
Purification	Protein A
Buffer	0.2 µm filtered solution in PBS

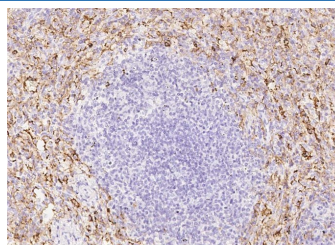
Applications Recommended Dilution

IHC-P	1:500-1:3000
--------------	--------------

Data



Immunohistochemistry of paraffin-embedded human liver using CD16b/FCGR3B Monoclonal Antibody at dilution of 1:2000.



Immunohistochemistry of paraffin-embedded human spleen using CD16b/FCGR3B Monoclonal Antibody at dilution of 1:2000.

Preparation & Storage

Storage	This antibody can be stored at 2°C-8°C for one month without detectable loss of activity. Antibody products are stable for twelve months from date of receipt when stored at -20°C to -80°C. Preservative-Free. Avoid repeated freeze-thaw cycles.
Shipping	Ice bag

Background

The protein encoded by this gene is a low affinity receptor for the Fc region of gamma immunoglobulins (IgG). The encoded protein acts as a monomer and can bind either monomeric or aggregated IgG. This gene may function to capture immune complexes in the peripheral circulation. Several transcript variants encoding different isoforms have been found for this gene. A highly-similar gene encoding a related protein is also found on chromosome 1.

For Research Use Only

Toll-free: 1-888-852-8623
Web: www.elabscience.com

Tel: 1-832-243-6086
Email: techsupport@elabscience.com

Fax: 1-832-243-6017

Rev. V1.0