

Recombinant alpha smooth muscle Actin Monoclonal Antibody

catalog number: **AN301435L**

Note: Centrifuge before opening to ensure complete recovery of vial contents.

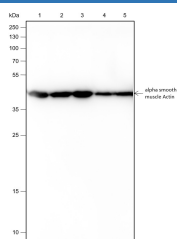
Description

Reactivity	Human;Rat;Mouse
Immunogen	Recombinant human alpha smooth muscle Actin fragment
Host	Rabbit
Isotype	IgG, κ
Clone	A130
Purification	Protein A purified
Buffer	PBS, 50% glycerol, 0.05% Proclin 300, 0.05% protein protectant.

Applications Recommended Dilution

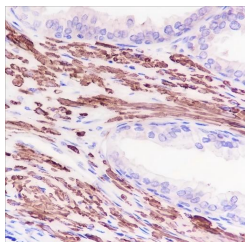
WB	1:500-1:2000
IHC	1:1000-1:5000
IF	1:50
FCM	1:50-1:100
IP	1:50-1:100

Data

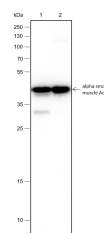


Western Blot with alpha smooth muscle Actin Monoclonal Antibody at dilution of 1:2000. Lane 1: MCF-7, Lane 2: HeLa, Lane 3: A431, Lane 4: HEK-293, Lane 5: NIH-3T3

Observed-MW:42 kDa
Calculated-MW:42 kDa

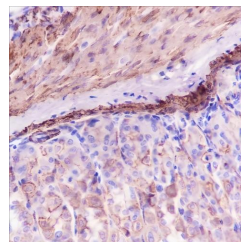


Immunohistochemistry of paraffin-embedded Human prostate hyperplasia using alpha smooth muscle Actin Monoclonal Antibody at dilution of 1:5000.



Western Blot with alpha smooth muscle Actin Monoclonal Antibody at dilution of 1:2000. Lane 1: Rat colon, Lane 2: Mouse colon

Observed-MW:42 kDa
Calculated-MW:42 kDa



Immunohistochemistry of paraffin-embedded Mouse stomach using alpha smooth muscle Actin Monoclonal Antibody at dilution of 1:5000.

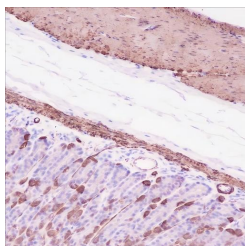
For Research Use Only

Toll-free: 1-888-852-8623
Web: www.elabscience.com

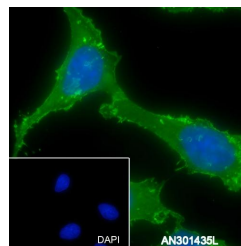
Tel: 1-832-243-6086
Email: techsupport@elabscience.com

Fax: 1-832-243-6017

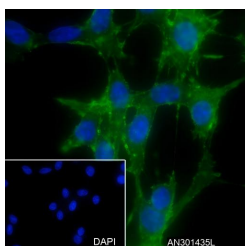
Rev. V1.0



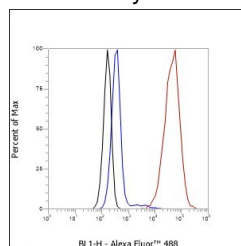
Immunohistochemistry of paraffin-embedded Rat stomach using alpha smooth muscle Actin Monoclonal Antibody at dilution of 1:5000.



Immunofluorescent analysis of (100% Ice-cold methanol) fixed HeLa cells using anti-alpha smooth muscle Actin Monoclonal Antibody at dilution of 1:50.



Immunofluorescent analysis of (100% Ice-cold methanol) fixed C6 cells using anti-alpha smooth muscle Actin Monoclonal Antibody at dilution of 1:50.



Flow cytometric analysis of human alpha smooth muscle Actin expression on HeLa cells. Cells were stained with purified anti-Human alpha smooth muscle Actin, then a Alexa Fluor 488-conjugated second step antibody. The histogram were derived from events with the forward and side light-scatter characteristics of intact cells.

Preparation & Storage

Storage

Store at -20°C Valid for 12 months. Avoid freeze / thaw cycles.

Shipping

Ice bag

Background

Alpha smooth muscle actin encoded by the ACTA2 gene is a key protein in the highly conserved actin family, which plays a crucial role in cell motility, structure and integrity. This isoform is predominantly expressed in vascular smooth muscle cells, where it is essential for maintaining the structure and function of blood vessels and other smooth muscle tissues. Mutations in ACTA2 are linked to various vascular disorders, including familial thoracic aortic aneurysms and dissections (TAAD) and multisystemic smooth muscle dysfunction syndrome.

For Research Use Only

Toll-free: 1-888-852-8623
Web: www.elabscience.com

Tel: 1-832-243-6086
Email: techsupport@elabscience.com

Fax: 1-832-243-6017

Rev. V1.0