

Recombinant YTHDC2 Monoclonal Antibody

catalog number: **E-AB-81516**

Note: Centrifuge before opening to ensure complete recovery of vial contents.

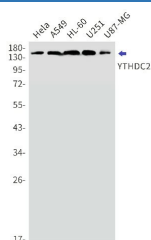
Description

| | |
|---------------------|---|
| Reactivity | Human |
| Immunogen | Recombinant protein of human YTHDC2 |
| Host | Rabbit |
| Isotype | IgG |
| Clone | R04-7F8 |
| Purification | Affinity Purified |
| Buffer | 50mM Tris-Glycine(pH 7.4), 0.15M NaCl, 40% Glycerol, 0.05% stabilizer and 0.05% protective protein. |

Applications

| Applications | Recommended Dilution |
|--------------|----------------------|
| WB | 1:500-1:1000 |

Data



Western blot detection of YTHDC2 in Hela, A549, HL-60, U251, U87-MG cell lysates using YTHDC2 Rabbit mAb (1:1000 diluted). Predicted band size: 160kDa. Observed band size: 160kDa.

Observed-MW: 160 kDa

Calculated-MW: 160 kDa

Preparation & Storage

| | |
|-----------------|--|
| Storage | Store at -20°C Valid for 12 months. Avoid freeze / thaw cycles. |
| Shipping | The product is shipped with ice pack, upon receipt, store it immediately at the temperature recommended. |

Background

YTHDC2, also named as Probable ATP-dependent RNA helicase YTHDC2, is a 1430 amino acid protein, which belongs to the DEAD box helicase family. YTHDC2 specifically recognizes and binds N6-methyladenosine (m6A)-containing RNAs. M6A is a modification present at internal sites of mRNAs and some non-coding RNAs and plays a role in the efficiency of mRNA splicing, processing and stability.

For Research Use Only