

TUBG2 Polyclonal Antibody

Catalog Number:E-AB-18724



Note: Centrifuge before opening to ensure complete recovery of vial contents.

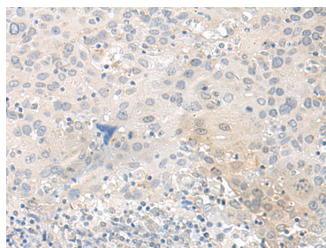
Description

| | |
|---------------------|--|
| Reactivity | Human, Mouse |
| Immunogen | Fusion protein of human TUBG2 |
| Host | Rabbit |
| Isotype | IgG |
| Purification | Antigen affinity purification |
| Conjugation | Unconjugated |
| Formulation | PBS with 0.05% NaN ₃ and 40% Glycerol,pH7.4 |

Applications Recommended Dilution

| | |
|--------------|----------------|
| IHC | 1:40-1:200 |
| ELISA | 1:5000-1:10000 |

Data



Immunohistochemistry of paraffin-embedded Human cervical cancer tissue using TUBG2 Polyclonal Antibody at dilution of 1:50(×200)

Preparation & Storage

Storage Store at -20°C. Avoid freeze / thaw cycles.

Background

TUBG2 (Tubulin Gamma 2) is a Protein Coding gene. Among its related pathways are Regulation of PLK1 Activity at G2/M Transition and Sertoli-Sertoli Cell Junction Dynamics. Gene Ontology (GO) annotations related to this gene include GTP binding and structural molecule activity. An important paralog of this gene is TUBG1.

For Research Use Only

A Reliable Research Partner in Life Science and Medicine

Toll-free: 1-888-852-8623

Web: www.elabscience.com

Tel: 1-832-243-6086

Email: techsupport@elabscience.com

Fax: 1-832-243-6017