

PE/Cyanine7 Anti-Human CD44 Antibody[P2A1]

Catalog Number: E-AB-F1038H

Note: Centrifuge before opening to ensure complete recovery of vial contents.

Description

Reactivity	Human
Host	Mouse
Isotype	Mouse IgG2a, κ
Clone No.	P2A1
Isotype Control	PE/Cyanine7 Mouse IgG2a, κ Isotype Control[C1.18.4] [Product E-AB-F09802H]
Conjugation	PE/Cyanine 7
Conjugation Information	PE/Cyanine7 is designed to be excited by the Blue (488 nm), Green (532 nm) and yellow-green (561 nm) lasers and detected using an optical filter centered near 775 nm (e.g., a 780/60 nm bandpass filter).
Storage Buffer	Phosphate buffered solution, pH 7.2, containing 0.09% sodium azide and 1% BSA.

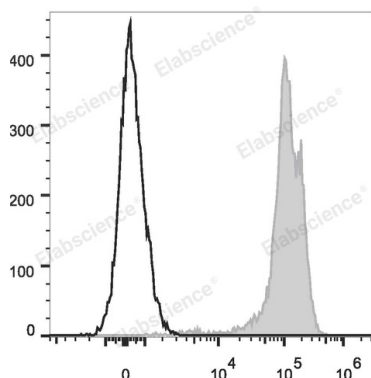
Applications

FCM

Recommended usage

Each lot of this antibody is quality control tested by flow cytometric analysis. **The amount of the reagent is suggested to be used 5 μL of antibody per test (million cells in 100 μL staining volume or per 100 μL of whole blood).** Please check your vial before the experiment. Since applications vary, the appropriate dilutions must be determined for individual use.

Data



Human peripheral blood lymphocytes are stained with PE/Cyanine7 Anti-Human CD44 Antibody (filled gray histogram). Unstained lymphocytes (empty black histogram) are used as control.

Preparation & Storage

Storage	Keep as concentrated solution. This product can be stored at 2-8°C for 12 months. Please protected from prolonged exposure to light and do not freeze.
Shipping	Ice bag

Antigen Information

Alternate Names	MDU2MDU3MIC4;CD44;CD44 antigen;CDw44;Epican;LHR;PGP-1;PGP-I;Phagocytic glycoprotein 1;Phagocytic glycoprotein I
Uniprot ID	P16070

For Research Use Only

Gene ID

960

Background

CD44 is a 80-95 kD glycoprotein also known as Hermes, Pgp1, H-CAM, or HUTCH. It is expressed on all leukocytes, endothelial cells, hepatocytes, and mesenchymal cells. As B and T cells become activated or progress to the memory stage, CD44 expression increases from a low or mid level of intensity to high expression levels. Thus, CD44 has been reported to be a valuable marker for memory cell subsets. CD44 is an adhesion molecule involved in leukocyte attachment to and rolling on endothelial cells, homing to peripheral lymphoid organs and to the sites of inflammation, and leukocyte aggregation.