

## CPLX3 Polyclonal Antibody

catalog number: E-AB-53051

**Note:** Centrifuge before opening to ensure complete recovery of vial contents.

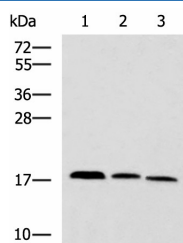
### Description

|                     |  |
|---------------------|--|
| <b>Reactivity</b>   | Human;Mouse;Rat  |
| <b>Immunogen</b>    | Fusion protein of human CPLX3  |
| <b>Host</b>         | Rabbit   |
| <b>Isotype</b>      | IgG  |
| <b>Purification</b> | Antigen affinity purification  |
| <b>Buffer</b>       | Phosphate buffered solution, pH 7.4, containing 0.05% stabilizer and 50% glycerol. |

### Applications Recommended Dilution

|            |               |
|------------|---------------|
| <b>WB</b>  | 1:1000-1:5000 |
| <b>IHC</b> | 1:50-1:200    |

### Data



Western blot analysis of Mouse kidney tissue Rat brain tissue Mouse liver tissue lysates using CPLX3 Polyclonal Antibody at dilution of 1:950  
Immunohistochemistry of paraffin-embedded Human liver cancer tissue using CPLX3 Polyclonal Antibody at dilution of 1:65(×200)

**Observed-MW:Refer to figures**  
**Calculated-MW:17 kDa**

### Preparation & Storage

|                 |  |
|-----------------|--|
| <b>Storage</b>  | Store at -20°C Valid for 12 months. Avoid freeze / thaw cycles.  |
| <b>Shipping</b> | The product is shipped with ice pack,upon receipt,store it immediately at the temperature recommended. |

### Background

Positively regulates a late step in synaptic vesicle exocytosis.

### For Research Use Only