

CADM2 Polyclonal Antibody

catalog number: E-AB-17789

Note: Centrifuge before opening to ensure complete recovery of vial contents.

Description

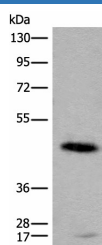
Reactivity	Human;Mouse;Rat
Immunogen	Synthetic peptide of human CADM2
Host	Rabbit
Isotype	IgG
Purification	Antigen affinity purification
Conjugation	Unconjugated
buffer	Phosphate buffered solution, pH 7.4, containing 0.05% stabilizer and 50% glycerol.

Applications

Recommended Dilution

WB	1:1000-1:5000
IHC	1:30-1:150

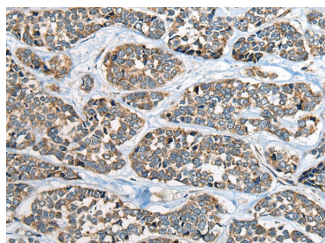
Data



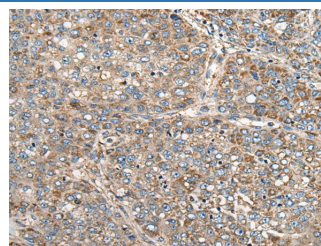
Western blot analysis of Human cerebella tissue lysate using CADM2 Polyclonal Antibody at dilution of 1:2000

Observed-MV: Refer to figures

Calculated-MV: 48 kDa



Immunohistochemistry of paraffin-embedded Human esophagus cancer tissue using CADM2 Polyclonal Antibody at dilution of 1:40($\times 200$)



Immunohistochemistry of paraffin-embedded Human liver cancer tissue using CADM2 Polyclonal Antibody at dilution of 1:40($\times 200$)

Preparation & Storage

Storage	Store at -20°C Valid for 12 months. Avoid freeze / thaw cycles.
Shipping	The product is shipped with ice pack, upon receipt, store it immediately at the temperature recommended.

Background

This gene encodes a member of the synaptic cell adhesion molecule 1 (SynCAM) family which belongs to the immunoglobulin (Ig) superfamily. The encoded protein has three Ig-like domains and a cytosolic protein 4.1 binding site near the C-terminus. Proteins belonging to the protein 4.1 family crosslink spectrin and interact with other cytoskeletal proteins. Multiple transcript variants encoding different isoforms have been found for this gene.

For Research Use Only