

## Recombinant Human CXCL7/NAP-2 Protein (His Tag)

**Catalog Number:** PKSH032306

**Note:** Centrifuge before opening to ensure complete recovery of vial contents.

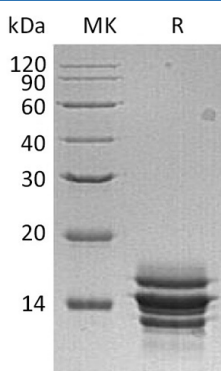
### Description

<b>Species</b>	Human
<b>Source</b>	HEK293 Cells-derived Human CXCL7;NAP-2 protein Ser35-Asp128, with an C-terminal His
<b>Calculated MW</b>	11.3 kDa
<b>Observed MW</b>	12-16 kDa
<b>Accession</b>	P02775
<b>Bio-activity</b>	Not validated for activity

### Properties

<b>Purity</b>	> 95 % as determined by reducing SDS-PAGE.
<b>Endotoxin</b>	< 1.0 EU per µg of the protein as determined by the LAL method.
<b>Storage</b>	Generally, lyophilized proteins are stable for up to 12 months when stored at -20 to -80 °C. Reconstituted protein solution can be stored at 4-8°C for 2-7 days. Aliquots of reconstituted samples are stable at < -20°C for 3 months.
<b>Shipping</b>	This product is provided as lyophilized powder which is shipped with ice packs.
<b>Formulation</b>	Lyophilized from a 0.2 µm filtered solution of 20mM HAc-Nac, 150mM NaCl, pH 4.0. Normally 5% - 8% trehalose, mannitol and 0.01% Tween 80 are added as protectants before lyophilization.
	Please refer to the specific buffer information in the printed manual.
<b>Reconstitution</b>	Please refer to the printed manual for detailed information.

### Data



> 95 % as determined by reducing SDS-PAGE.

### Background

### For Research Use Only

Toll-free: 1-888-852-8623  
Web: [www.elabscience.com](http://www.elabscience.com)

Tel: 1-832-243-6086  
Email: [techsupport@elabscience.com](mailto:techsupport@elabscience.com)

Fax: 1-832-243-6017

Rev. V3.6

Human Chemokine (C-X-C motif) Ligand 7 (CXCL7); also known as neutrophil activating peptide 2 (NAP-2); is a member of the CXC chemokines containing an ELR domain (Glu-Leu-Arg tripeptide motif). Similar to other ELR domain containing CXC chemokines; such as IL-8 and the GRO proteins; CXCL7 binds CXCR2; chemoattracts and activates neutrophils. CXCL7; Connective Tissue Activating Protein III (CTAPIII) and  $\beta$ thromboglobulin ( $\beta$ TG); are proteolytically processed carboxylterminal fragments of platelet basic protein (PBP) which is found in the alphagranules of human platelets. Although CTAPIII;  $\beta$ TG; and PBP represent amino-terminal extended variants of NAP2 and possess the same CXC chemokine domains; these proteins do not exhibit CXCL7/NAP2 activity. CXCL7 induces cell migration through the G-protein-linked receptor CXCR-2.