

## Recombinant Human CD157/BST1 Protein (Fc Tag)

**Catalog Number:** PKSH033775

**Note:** Centrifuge before opening to ensure complete recovery of vial contents.

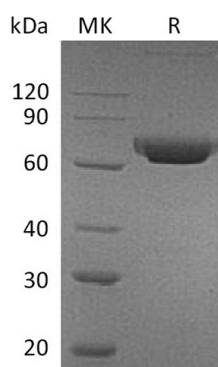
### Description

|                      |   |
|----------------------|---|
| <b>Species</b>       | Human   |
| <b>Source</b>        | HEK293 Cells-derived Human CD157;BST1 protein Gly29-Lys292, with an C-terminal Fc |
| <b>Calculated MW</b> | 57.1 kDa  |
| <b>Observed MW</b>   | 75 kDa  |
| <b>Accession</b>     | Q10588  |
| <b>Bio-activity</b>  | Not validated for activity  |

### Properties

|                       |  |
|-----------------------|--|
| <b>Purity</b>         | > 95 % as determined by reducing SDS-PAGE.   |
| <b>Endotoxin</b>      | < 1.0 EU per µg of the protein as determined by the LAL method.  |
| <b>Storage</b>        | Generally, lyophilized proteins are stable for up to 12 months when stored at -20 to -80 °C. Reconstituted protein solution can be stored at 4-8°C for 2-7 days. Aliquots of reconstituted samples are stable at < -20°C for 3 months. |
| <b>Shipping</b>       | This product is provided as lyophilized powder which is shipped with ice packs.  |
| <b>Formulation</b>    | Lyophilized from a 0.2 µm filtered solution of 20mM Tris-HCl, 150mM NaCl, pH 8.0. Normally 5% - 8% trehalose, mannitol and 0.01% Tween 80 are added as protectants before lyophilization.  |
|                       | Please refer to the specific buffer information in the printed manual.   |
| <b>Reconstitution</b> | Please refer to the printed manual for detailed information.   |

### Data



> 95 % as determined by reducing SDS-PAGE.

### Background

CD38; also called ADP-ribosyl cyclase; is a Type II integral membrane protein with 301 amino acids in length that belongs to the ADP-ribosyl cyclase family. It synthesizes the second messengers cyclic ADP-ribose and nicotinate-adenine dinucleotide phosphate; the former a second messenger for glucose-induced insulin secretion. And also moonlights as a receptor in cells of the immune system. CD38 is expressed in B and T lymphocytes; osteoclasts; and in cardiac; pancreatic; liver and kidney cells. Through its production of cyclic ADP-ribose; CD38 modulates calcium-mediated signal transduction in many types of cells; including neutrophils and pancreatic beta cells.

### For Research Use Only