

MCM5 Polyclonal Antibody

catalog number: E-AB-64688

Note: Centrifuge before opening to ensure complete recovery of vial contents.

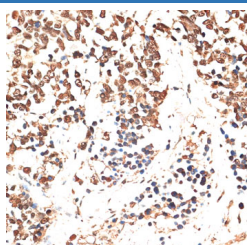
Description

Reactivity	Human;Mouse;Rat
Immunogen	Recombinant fusion protein of human MCM5 (NP_006730.2).
Host	Rabbit
Isotype	IgG
Purification	Affinity purification
Buffer	Phosphate buffered solution, pH 7.4, containing 0.05% stabilizer and 50% glycerol.

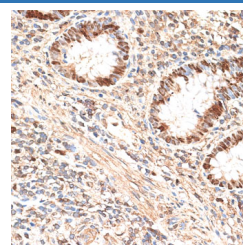
Applications

Applications	Recommended Dilution
IHC	1:50-1:200
IF	1:50-1:200

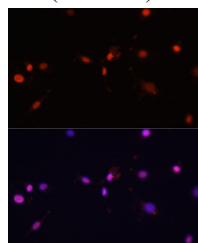
Data



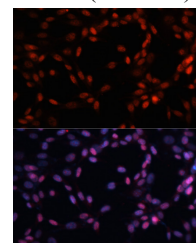
Immunohistochemistry of paraffin-embedded Human lung cancer using MCM5 Polyclonal Antibody at dilution of 1:100 (40x lens).



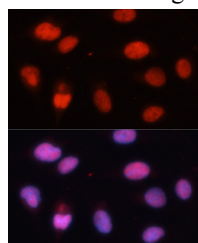
Immunohistochemistry of paraffin-embedded Human appendix using MCM5 Polyclonal Antibody at dilution of 1:100 (40x lens).



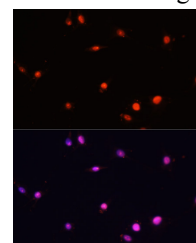
Immunofluorescence analysis of C6 cells using MCM5 Polyclonal Antibody at dilution of 1:100. Blue: DAPI for nuclear staining.



Immunofluorescence analysis of NIH-3T3 cells using MCM5 Polyclonal Antibody at dilution of 1:100. Blue: DAPI for nuclear staining.

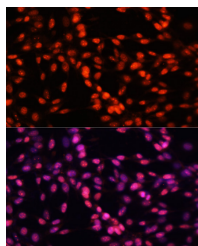


Immunofluorescence analysis of U-2 OS cells using MCM5 Polyclonal Antibody at dilution of 1:100. Blue: DAPI for nuclear staining.

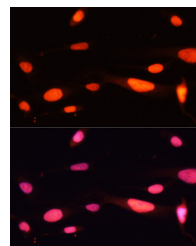


Immunofluorescence analysis of C6 cells using MCM5 Polyclonal Antibody at dilution of 1:100. Blue: DAPI for nuclear staining.

For Research Use Only



Immunofluorescence analysis of NIH-3T3 cells using MCM5 Polyclonal Antibody at dilution of 1:100. Blue: DAPI for nuclear staining.



Immunofluorescence analysis of U-2 OS cells using MCM5 Polyclonal Antibody at dilution of 1:100. Blue: DAPI for nuclear staining.

Preparation & Storage

Storage

Store at -20°C Valid for 12 months. Avoid freeze / thaw cycles.

Shipping

The product is shipped with ice pack, upon receipt, store it immediately at the temperature recommended.

Background

The protein encoded by this gene is structurally very similar to the CDC46 protein from *S. cerevisiae*, a protein involved in the initiation of DNA replication. The encoded protein is a member of the MCM family of chromatin-binding proteins and can interact with at least two other members of this family. The encoded protein is upregulated in the transition from the G0 to G1/S phase of the cell cycle and may actively participate in cell cycle regulation.

For Research Use Only