

Recombinant EpCAM Monoclonal Antibody

catalog number: **E-AB-81555**

Note: Centrifuge before opening to ensure complete recovery of vial contents.

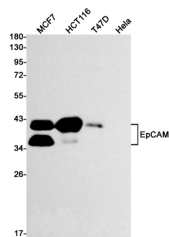
Description

Reactivity	Human;Mouse;Rat
Immunogen	Recombinant protein of human EpCAM
Host	Rabbit
Isotype	IgG
Clone	R08-8D1
Purification	Affinity Purified
Buffer	50mM Tris-Glycine(pH 7.4), 0.15M NaCl, 40% Glycerol, 0.05% stabilizer and 0.05% protective protein.

Applications

Applications	Recommended Dilution
WB	1:500-1:1000
IHC	1:50-1:100
IF	1:20-1:100

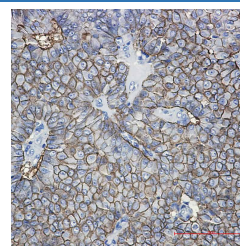
Data



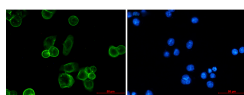
Western blot detection of EpCAM in MCF7, HCT116, T47D, HeLa cell lysates using EpCAM Rabbit mAb (1:1000 diluted). Predicted band size: 35 kDa. Observed band size: 40 kDa.

Observed-MW: 40 kDa

Calculated-MW: 35 kDa



Immunohistochemistry of EpCAM in paraffin-embedded Human breast cancer tissue using EpCAM Rabbit mAb at dilution 1:50



Immunofluorescence of EpCAM (green) in MCF-7 using EpCAM antibody at dilution 1:20, and DAPI (blue)

Preparation & Storage

Storage	Store at -20°C Valid for 12 months. Avoid freeze / thaw cycles.
Shipping	The product is shipped with ice pack, upon receipt, store it immediately at the temperature recommended.

Background

For Research Use Only

Epithelial cell adhesion molecule (EpCAM,CD326) is a type I transmembrane glycoprotein that functions as a homophilic, epithelial-specific intercellular cell-adhesion molecule. In addition to cell adhesion, EpCAM is also involved in cellular signaling, cell migration, proliferation, and differentiation. EpCAM is highly expressed on most carcinomas and therefore of potential use as a diagnostic and prognostic marker for a variety of carcinomas, and has become a therapeutic target.

For Research Use Only

Toll-free: 1-888-852-8623
Web: www.elabscience.com

Tel: 1-832-243-6086
Email: techsupport@elabscience.com

Fax: 1-832-243-6017

Rev. V1.7