

# Recombinant Rat CXCL3 Protein(Gst Tag)

Catalog Number: PDER100104

**Note:** Centrifuge before opening to ensure complete recovery of vial contents.

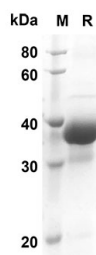
## Description

<b>Species</b>	Rat
<b>Source</b>	E.coli-derived Rat CXCL3 protein Arg33-Ser101, with an N-terminal Gst
<b>Mol_Mass</b>	39.6 kDa
<b>Accession</b>	Q10746
<b>Bio-activity</b>	Not validated for activity

## Properties

<b>Purity</b>	> 90% as determined by reducing SDS-PAGE.
<b>Endotoxin</b>	< 10 EU/mg of the protein as determined by the LAL method
<b>Storage</b>	Generally, lyophilized proteins are stable for up to 12 months when stored at -20 to -80 °C. Reconstituted protein solution can be stored at 4-8°C for 2-7 days. Aliquots of reconstituted samples are stable at < -20°C for 3 months.
<b>Shipping</b>	This product is provided as lyophilized powder which is shipped with ice packs.
<b>Formulation</b>	Lyophilized from a 0.2 µm filtered solution in PBS with 5% Trehalose and 5% Mannitol.
<b>Reconstitution</b>	It is recommended that sterile water be added to the vial to prepare a stock solution of 0.5 mg/mL. Concentration is measured by UV-Vis.

## Data



SDS-PAGE analysis of Rat CXCL3 proteins, 2 µg/lane of Recombinant Rat CXCL3 proteins was resolved with SDS-PAGE under reducing conditions, showing bands at 39.6 KD

## Background

CXCL3 is involved in migration, invasion, proliferation and tubule formation of trophoblasts and may play a key role in the pathogenesis of preeclampsia. CXCL3 autocrine/paracrine pathways are involved in the development of prostate cancer by regulating the expression of the target genes that are related to the progression of malignancies. CXCL3 is a novel adipokine that facilitates adipogenesis in an autocrine and/or a paracrine manner through induction of c/ebpb and c/ebpd. CXCL3 and its receptor CXCR2 are overexpressed in prostate cancer cells, prostate epithelial cells and prostate cancer tissues, which may play multiple roles in prostate cancer progression and metastasis.

## For Research Use Only