

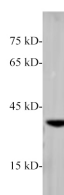
RAB42 Polyclonal Antibody

catalog number: E-AB-40535

Note: Centrifuge before opening to ensure complete recovery of vial contents.

Description	
Reactivity	Human;Mouse
Immunogen	Synthetic peptide corresponding to RAB42 conjugated to keyhole limpet haemocyanin.
Host	Rabbit
Isotype	IgG
Purification	Antigen Affinity Purification
Conjugation	Unconjugated
Buffer	PBS with 0.05% proclin 300, 1% protective protein and 50% glycerol,pH7.4
Applications	Recommended Dilution
WB	1:1000-2000

Data



Western blot of mouse brain lysates with anti-RAB42 polyclonal antibody at dilution of 1:1000.

Observed-MW:30 kDa

Calculated-MW:22 kDa

Preparation & Storage	
Storage	Store at -20°C Valid for 12 months. Avoid freeze / thaw cycles.
Shipping	The product is shipped with ice pack,upon receipt,store it immediately at the temperature recommended.

Background
RAB42 (RAB42, Member RAS Oncogene Family) is a Protein Coding gene. Among its related pathways are Metabolism of proteins and RAB geranylgeranylation. Gene Ontology (GO) annotations related to this gene include GTP binding and GTPase activity