

## Recombinant Mouse Ccl21a Protein(Sumo Tag)

Catalog Number: PDEM100139

**Note:** Centrifuge before opening to ensure complete recovery of vial contents.

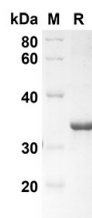
### Description

|               |   |
|---------------|---|
| Species       | Mouse   |
| Source        | E.coli-derived Mouse Ccl21a protein Ser24-Gly133, with an N-terminal Sumo |
| Calculated MW | 25 kDa  |
| Observed MW   | 35 kDa  |
| Accession     | P84444  |
| Bio-activity  | Not validated for activity  |

### Properties

|                |  |
|----------------|--|
| Purity         | > 90% as determined by reducing SDS-PAGE.  |
| Endotoxin      | < 10 EU/mg of the protein as determined by the LAL method  |
| Storage        | Generally, lyophilized proteins are stable for up to 12 months when stored at -20 to -80 °C. Reconstituted protein solution can be stored at 4-8°C for 2-7 days. Aliquots of reconstituted samples are stable at < -20°C for 3 months. |
| Shipping       | This product is provided as lyophilized powder which is shipped with ice packs.  |
| Formulation    | Lyophilized from a 0.2 µm filtered solution in PBS with 5% Trehalose and 5% Mannitol.  |
| Reconstitution | It is recommended that sterile water be added to the vial to prepare a stock solution of 0.5 mg/mL. Concentration is measured by UV-Vis.   |

### Data



SDS-PAGE analysis of Mouse Ccl21a proteins, 2 µg/lane of Recombinant Mouse Ccl21a proteins was resolved with an SDS-PAGE under reducing conditions, showing bands at 25 KD