

Recombinant Mouse Alpha-1-antitrypsin 1-1/Serpin A1e (C-6His)



Catalog Number:PKSM041392

Note: Centrifuge before opening to ensure complete recovery of vial contents.

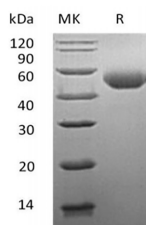
Description

Synonyms	Alpha-1-antitrypsin 1-5;Alpha-1 protease inhibitor 5;Serine protease inhibitor 1-5;Serine protease inhibitor A1e;Serpin A1e;Serpina1e;Dom5;Spi1-5
Species	Mouse
Expression Host	HEK293 Cells
Sequence	Glu25-Lys413
Accession	Q00898
Calculated Molecular Weight	44.5 kDa
Observed molecular weight	47-68 kDa
Tag	C-His

Properties

Purity	> 95 % as determined by reducing SDS-PAGE.
Endotoxin	< 1.0 EU per µg of the protein as determined by the LAL method.
Storage	Store at < -20°C, stable for 6 months. Please minimize freeze-thaw cycles.
Shipping	This product is provided as liquid. It is shipped at frozen temperature with blue ice/gel packs. Upon receipt, store it immediately at < - 20°C.
Formulation	Supplied as a 0.2 µm filtered solution of 20mM Tris-HCl, 150mM NaCl, pH 8.0.
Reconstitution	Not Applicable

Data



> 95 % as determined by reducing SDS-PAGE.

Background

Alpha-1-antitrypsin 1-5(SERPIN A1) is a secreted protein and belongs to the serpin family. Serpins bind the protease active site resulting in a major conformational rearrangement that traps the enzyme in a covalent acyl-enzyme intermediate. Mouse SERPIN A1 is a serine protease inhibitor whose targets include elastase, plasmin, thrombin, trypsin, chymotrypsin, and plasminogen activator. Defects in this gene can cause emphysema or liver disease. Several transcript variants encoding the same protein have been found for this gene.

For Research Use Only

A Reliable Research Partner in Life Science and Medicine

Toll-free: 1-888-852-8623

Web: www.elabscience.com

Tel: 1-832-243-6086

Email: techsupport@elabscience.com

Fax: 1-832-243-6017