

## Purified Anti-Mouse Ly6G Antibody[1A8], Functional Grade

catalog number: E-AB-F11080

**Note:** Centrifuge before opening to ensure complete recovery of vial contents.

### Description

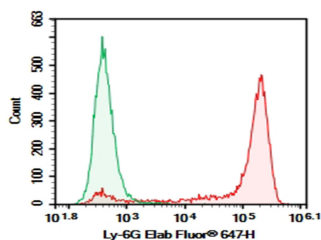
<b>Reactivity</b>	Mouse
<b>Immunogen</b>	Recombinant Mouse Ly6G protein
<b>Host</b>	Rat
<b>Isotype</b>	Rat IgG2a, $\kappa$
<b>Clone</b>	1A8
<b>Purification</b>	>98%, Protein A/G purified
<b>Buffer</b>	Sterile PBS, pH 7.2. < 1.0 EU per mg of the antibody as determined by the LAL method.

### Applications

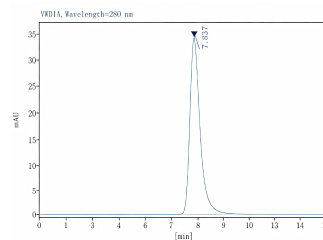
### Recommended Dilution

<b>FCM</b>	2 $\mu$ g/mL (0.5 $\times$ 10 <sup>6</sup> -1 $\times$ 10 <sup>6</sup> cells)
<b>Depletion</b>	Reported in the literature

### Data



C57BL/6 Mouse bone marrow cells were stained with 0.2  $\mu$ g Purified Anti-Mouse Ly6G Antibody[1A8], Functional Grade (Right) and 0.2  $\mu$ g Rat IgG2a,  $\kappa$  Isotype Control (Left), followed by Elab Fluor® 647-conjugated Goat Anti-Rat IgG Secondary Antibody.



Monomer purity  $\geq$ 95% as determined by analytical size-exclusion chromatography (SEC)

### Preparation & Storage

<b>Storage</b>	Store at 4°C valid for 12 months or -20°C valid for long term storage, avoid freeze / thaw cycles. This preparation contains no preservatives, thus it should be handled under aseptic conditions.
<b>Shipping</b>	Ice bag

### Background

Lymphocyte antigen 6 complex, locus G (Ly-6G), a 21-25 kD GPI-anchored protein, is expressed on the majority of myeloid cells in bone marrow and peripheral granulocytes.

None (Azide-Free, Low Endotoxin) are perfectly suited to be used in culture or in vivo (for nonhuman studies) for functional assays blocking, neutralizing, activation or depletion where the presence of azide may damage cells or exogenous endotoxin may signal or activate cells.

### Application References

Seth B Coffelt, et al. Nature. 2015 Jun 18;522(7556):345-348.

### For Research Use Only