

# Recombinant Human Hemojuvelin/HFE2 Protein (His Tag)



Catalog Number: PKSH031623

**Note:** Centrifuge before opening to ensure complete recovery of vial contents.

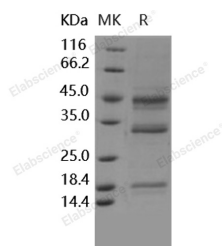
## Description

<b>Synonyms</b>	HFE2A;HJV;JH;RGM C
<b>Species</b>	Human
<b>Expression Host</b>	Baculovirus-Insect Cells
<b>Sequence</b>	Met 1-Ser 399
<b>Accession</b>	Q6ZVN8-1
<b>Calculated Molecular Weight</b>	40 kDa
<b>Observed molecular weight</b>	20&34&44 kDa
<b>Tag</b>	C-His

## Properties

<b>Purity</b>	> 95 % as determined by reducing SDS-PAGE.
<b>Endotoxin</b>	< 1.0 EU per µg of the protein as determined by the LAL method.
<b>Storage</b>	Generally, lyophilized proteins are stable for up to 12 months when stored at -20 to -80°C. Reconstituted protein solution can be stored at 4-8°C for 2-7 days. Aliquots of reconstituted samples are stable at < -20°C for 3 months.
<b>Shipping</b>	This product is provided as lyophilized powder which is shipped with ice packs.
<b>Formulation</b>	Lyophilized from sterile PBS, 500mM NaCl, pH 7.0, 10% glycerol Normally 5 % - 8 % trehalose, mannitol and 0.01% Tween80 are added as protectants before lyophilization. Please refer to the specific buffer information in the printed manual.
<b>Reconstitution</b>	Please refer to the printed manual for detailed information.

## Data



> 95 % as determined by reducing SDS-PAGE.

## Background

Hemojuvelin, also known as HFE2, is a membrane-bound and soluble protein which belongs to the repulsive guidance molecule (RGM) family. It is known that RGMs function through Neogenin, a homologue of the Netrin receptor deleted in colon cancer. In mammals, RGM family consists of three glycoproteins which have discrete expression patterns and functions (RGM-A, RGM-B, and RGM-C). Hemojuvelin is expressed in adult and fetal liver, heart, and skeletal muscle. Hemojuvelin acts as a bone morphogenetic protein (BMP) coreceptor. Enhancement of BMP signaling regulates hepcidin (HAMP) expression and iron metabolism. It plays a key role in iron metabolism. Hemojuvelin represents the cellular receptor for hepcidin. It may be a component of the signaling pathway which activates hepcidin or it may act as a modulator of hepcidin expression. Defects in hemojuvelin are the cause of hemochromatosis type 2A, also known as

## For Research Use Only

A Reliable Research Partner in Life Science and Medicine

Toll-free: 1-888-852-8623

Web: [www.elabscience.com](http://www.elabscience.com)

Tel: 1-832-243-6086

Email: [techsupport@elabscience.com](mailto:techsupport@elabscience.com)

Fax: 1-832-243-6017

# Recombinant Human Hemojuvelin/HFE2 Protein (His Tag)



Catalog Number: PKSH031623

---

juvenile hemochromatosis (JH).

---

## For Research Use Only

A Reliable Research Partner in Life Science and Medicine

Toll-free: 1-888-852-8623

Tel: 1-832-243-6086

Fax: 1-832-243-6017

Web: [www.elabscience.com](http://www.elabscience.com)

Email: [techsupport@elabscience.com](mailto:techsupport@elabscience.com)