

# CAMKK1 Polyclonal Antibody

catalog number: E-AB-52514

**Note:** Centrifuge before opening to ensure complete recovery of vial contents.

## Description

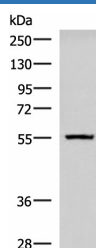
<b>Reactivity</b>	Human;Mouse;Rat
<b>Immunogen</b>	Fusion protein of human CAMKK1
<b>Host</b>	Rabbit
<b>Isotype</b>	IgG
<b>Purification</b>	Antigen affinity purification
<b>Conjugation</b>	Unconjugated
<b>buffer</b>	Phosphate buffered solution, pH 7.4, containing 0.05% stabilizer and 50% glycerol.

## Applications

## Recommended Dilution

<b>WB</b>	1:500-1:2000
<b>IHC</b>	1:30-1:150

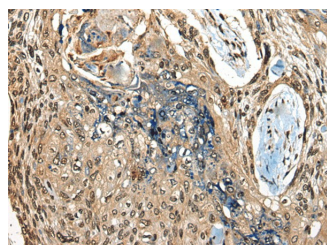
## Data



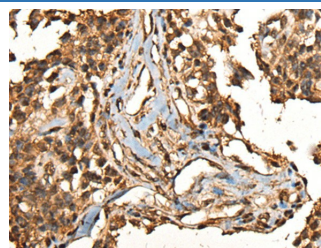
Western blot analysis of Human cerebella tissue lysate using CAMKK1 Polyclonal Antibody at dilution of 1:700

**Observed-MV: Refer to figures**

**Calculated-MV: 56 kDa**



Immunohistochemistry of paraffin-embedded Human esophagus cancer tissue using CAMKK1 Polyclonal Antibody at dilution of 1:35 (x200)



Immunohistochemistry of paraffin-embedded Human ovarian cancer tissue using CAMKK1 Polyclonal Antibody at dilution of 1:35 (x200)

## Preparation & Storage

<b>Storage</b>	Store at -20°C Valid for 12 months. Avoid freeze / thaw cycles.
<b>Shipping</b>	The product is shipped with ice pack, upon receipt, store it immediately at the temperature recommended.

## Background

The product of this gene belongs to the Serine/Threonine protein kinase family, and to the Ca<sup>2+</sup>/calmodulin-dependent protein kinase subfamily. This protein plays a role in the calcium/calmodulin-dependent (CaM) kinase cascade. Three transcript variants encoding two distinct isoforms have been identified for this gene.

## For Research Use Only