

Recombinant Human Alpha-enolase/Enolase 1/MPB-1/NNE(C-6His)

Catalog Number: PKSH033843

Note: Centrifuge before opening to ensure complete recovery of vial contents.

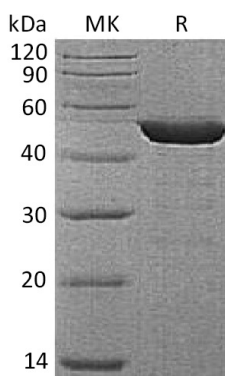
Description

Species	Human
Source	E.coli-derived Human Enolase 1;MPB-1;NNE protein Met1-Lys434, with an C-terminal His
Calculated MW	48.0 kDa
Observed MW	45-55 kDa
Accession	P06733
Bio-activity	Not validated for activity

Properties

Purity	> 95 % as determined by reducing SDS-PAGE.
Concentration	Subject to label value.
Endotoxin	< 1.0 EU per µg of the protein as determined by the LAL method.
Storage	Store at < -20°C, stable for 6 months. Please minimize freeze-thaw cycles.
Shipping	This product is provided as liquid. It is shipped at frozen temperature with blue ice/ gel packs. Upon receipt, store it immediately at < - 20°C.
Formulation	Supplied as a 0.2 µm filtered solution of 20mM Tris-HCl, 250mM NaCl, 1mM MgSO ₄ , 20% Glycerol, 5% Trehalose, 5% Mannitol, 0.02% Tween 80, pH 7.5.

Data



Background

Alpha-enolase, also known as MPB-1, NNE, Enolase 1, belongs to the enolase family. Mammalian enolase is composed of 3 isozyme subunits, alpha, beta and gamma, which can form homodimers or heterodimers which are cell-type and development-specific. ENO1 interacts with PLG in the neuronal plasma membrane and promotes its activation. The C-terminal lysine is required for this binding. Isoform MBP-1 interacts with TRAPPC2B. ENO1 interacts with ENO4 and PGAM2. The alpha/alpha homodimer of ENO1 is expressed in embryo and in most adult tissues. The alpha/beta heterodimer and the beta/beta homodimer are found in striated muscle, and the alpha/gamma heterodimer and the gamma/gamma homodimer in neurons. During ontogenesis, there is a transition from the alpha/alpha homodimer to the alpha/beta heterodimer in striated muscle cells, and to the alpha/gamma heterodimer in nerve cells. Multifunctional enzyme that, as well as its role in glycolysis, plays a part in various processes such as growth control, hypoxia tolerance and allergic responses and may also function in the intravascular and pericellular fibrinolytic system due to its ability to serve as a receptor and activator of plasminogen on the cell surface of several cell-types such as leukocytes and neurons. ENO1 also stimulates immunoglobulin production.

For Research Use Only

Toll-free: 1-888-852-8623
Web: www.elabscience.com

Tel: 1-832-243-6086
Email: techsupport@elabscience.com

Fax: 1-832-243-6017