

## IL22RA1 Polyclonal Antibody

**catalog number: E-AB-70163**

**Note:** Centrifuge before opening to ensure complete recovery of vial contents.

### Description

<b>Reactivity</b>	Human;Mouse;Rat
<b>Immunogen</b>	KLH conjugated Synthetic peptide corresponding to Mouse IL22RA1
<b>Host</b>	Rabbit
<b>Isotype</b>	IgG
<b>Purification</b>	Affinity purification
<b>Buffer</b>	Phosphate buffered solution, pH 7.4, containing 0.05% stabilizer, 1% protein protectant and 50% glycerol.

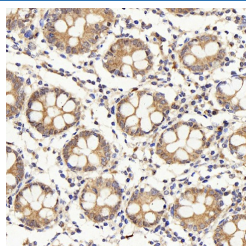
### Applications

**IHC**

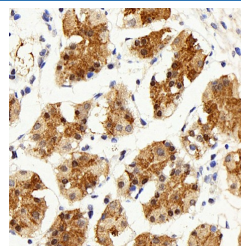
### Recommended Dilution

1:200

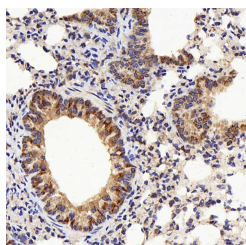
### Data



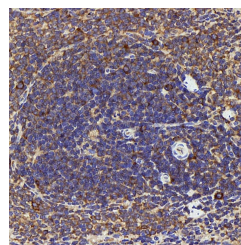
Immunohistochemistry analysis of paraffin-embedded human colon using IL22RA1 Polyclonal Antibody at dilution of 1:200.



Immunohistochemistry analysis of paraffin-embedded human stomach using IL22RA1 Polyclonal Antibody at dilution of 1:200.



Immunohistochemistry analysis of paraffin-embedded mouse lung using IL22RA1 Polyclonal Antibody at dilution of 1:200.



Immunohistochemistry analysis of paraffin-embedded Rat spleen using IL22RA1 Polyclonal Antibody at dilution of 1:200.

### Preparation & Storage

#### Storage

Store at -20°C Valid for 12 months. Avoid freeze / thaw cycles.

#### Shipping

The product is shipped with ice pack, upon receipt, store it immediately at the temperature recommended.

### Background

The protein encoded by this gene belongs to the class II cytokine receptor family, and has been shown to be a receptor for interleukin 22 (IL22). IL22 receptor is a protein complex that consists of this protein and interleukin 10 receptor, beta (IL10BR/CRFB4), a subunit also shared by the receptor complex for interleukin 10 (IL10). This gene and interleukin 28 receptor, alpha (IL28RA) form a cytokine receptor gene cluster in the chromosomal region 1p36.

### For Research Use Only