

alpha Tubulin Monoclonal Antibody

catalog number: E-AB-48012

Note: Centrifuge before opening to ensure complete recovery of vial contents.

Description

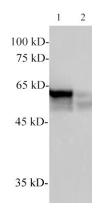
Reactivity	Human;Mouse;E.coli;Scallop;Zebrafish
Immunogen	Recombinant human TUBA protein
Host	Mouse
Isotype	IgG2a
Clone	2H2
Purification	Protein A/G Purification
Conjugation	Unconjugated
buffer	PBS with 0.05% proclin 300, 1% protective protein and 50% glycerol,pH7.4

Applications

Recommended Dilution

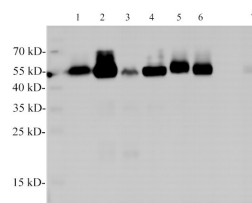
WB	1:2000-5000
-----------	-------------

Data



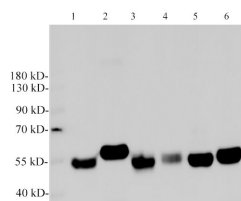
Western Blotting with anti-TUBA monoclonal antibody at dilution of 1:3000. Lane 1: Scallop Muscle lysates, Lane 2: Zebrafish lysates

Observed-MV:55 kDa
Calculated-MV:55 kDa



Western Blotting with anti-TUBA monoclonal antibody at dilution of 1:2000. Lane 1: Hela cell lysates, Lane 2: jurkat cell lysates, Lane, 3: 293T lysates, Lane 4: MCF-7 cell lysates, Lane 5: HT-29 cell lysates, Lane 6: HepG2 cell lysates, Lane 7: Rat kidney lysates

Observed-MV:55 kDa
Calculated-MV:55 kDa



Western Blotting with anti-TUBA monoclonal antibody at dilution of 1:2000. Lane 1: NIH/3T3 cell lysates, Lane 2: Raw264.7 cell lysates, Lane 3: Mouse heart lysates, Lane 4: Mouse spleen lysates, Lane 5: Mouse brain lysates, Lane 6: Mouse kidney lysates

Observed-MV:55 kDa
Calculated-MV:55 kDa

Preparation & Storage

Storage Store at -20°C Valid for 12 months. Avoid freeze / thaw cycles.

For Research Use Only

alpha Tubulin Monoclonal Antibody

catalog number: E-AB-48012



Shipping

The product is shipped with ice pack, upon receipt, store it immediately at the temperature recommended.

Background

Tubulin is a highly conserved $\alpha\beta$ dimeric protein present and is essential for all eukaryotes. $\alpha\beta$ -Tubulin dimers assemble into microtubules, dynamic polymers important in a variety of functions, most noticeably, mitosis. Tubulin assembly and disassembly are linked to guanosine triphosphate hydrolysis.

For Research Use Only

A Reliable Research Partner in Life Science and Medicine
Tel: 400-999-2100

Email: techsupport@elabscience.cn

Web: www.elabscience.cn

Rev. V1.9