

Recombinant Cytokeratin 7 Monoclonal Antibody

catalog number: **AN300948L**

Note: Centrifuge before opening to ensure complete recovery of vial contents.

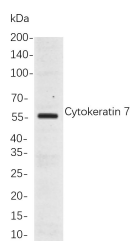
Description

Reactivity	Human;Mouse;Rat
Immunogen	Recombinant Human Cytokeratin 7 protein
Host	Rabbit
Isotype	IgG, κ
Clone	4F5
Purification	Protein A
Buffer	PBS, 50% glycerol, 0.05% Proclin 300, 0.05% protein protectant.

Applications Recommended Dilution

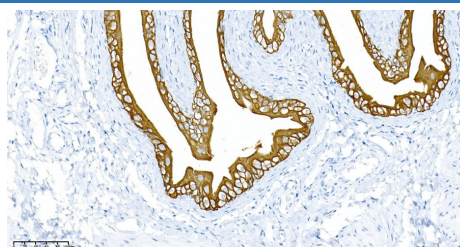
IHC	1:1000-1:2000
WB	1:1000-1:5000

Data



Western Blot with Recombinant Cytokeratin 7 Monoclonal Antibody at dilution of 1:1000 dilution. Lane A: Hela cells.

Observed-MW:55 kDa
Calculated-MW:51 kDa



Immunohistochemistry of paraffin-embedded rat bladder using Recombinant Cytokeratin 7 Monoclonal Antibody at dilution of 1:200.

Preparation & Storage

Storage	Store at -20°C Valid for 12 months. Avoid freeze / thaw cycles.
Shipping	Ice bag

Background

KRT7(keratin 7) Homo sapiens The protein encoded by this gene is a member of the keratin gene family. The type II cytokeratins consist of basic or neutral proteins which are arranged in pairs of heterotypic keratin chains coexpressed during differentiation of simple and stratified epithelial tissues. This type II cytokeratin is specifically expressed in the simple epithelia lining the cavities of the internal organs and in the gland ducts and blood vessels. The genes encoding the type II cytokeratins are clustered in a region of chromosome 12q12-q13. Alternative splicing may result in several transcript variants; however, not all variants have been fully described.

For Research Use Only

Toll-free: 1-888-852-8623
Web: www.elabscience.com

Tel: 1-832-243-6086
Email: techsupport@elabscience.com

Fax: 1-832-243-6017

Rev. V1.0