

THOC7 Polyclonal Antibody

Catalog Number: E-AB-14720

Note: Centrifuge before opening to ensure complete recovery of vial contents.

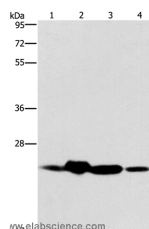
Description

Reactivity	Human, Mouse
Immunogen	Recombinant protein of human THOC7
Host	Rabbit
Isotype	IgG
Purification	Affinity purification
Conjugation	Unconjugated
Formulation	PBS with 0.05% sodium azide and 50% glycerol, PH7.4

Applications Recommended Dilution

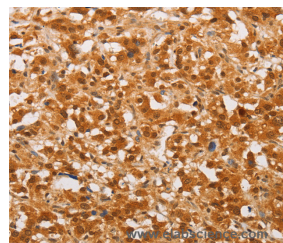
WB	1:500-1:2000
IHC	1:50-1:200

Data

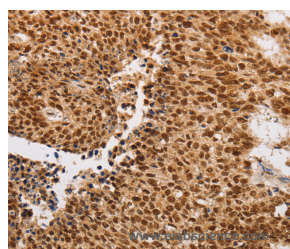


Western Blot analysis of Mouse spleen and Human fetal liver tissue, hela cell and Human fetal brain tissue using THOC7 Polyclonal Antibody at dilution of 1:450

Calculated Mw: 24kDa



Immunohistochemistry of paraffin-embedded Human thyroid cancer using THOC7 Polyclonal Antibody at dilution of 1:30



Immunohistochemistry of paraffin-embedded Human lung cancer using THOC7 Polyclonal Antibody at dilution of 1:30

Preparation & Storage

Storage Store at -20°C. Avoid freeze / thaw cycles.

Background

NIF3L1 BP1 (Ngg1-interacting factor 3-like 1 binding protein 1), also known as THOC7 (THO complex subunit 7 homolog), fSAP24 or hTREX30, is a 204 amino acid cytoplasmic and nuclear protein that belongs to the THOC7 family

For Research Use Only

A Reliable Research Partner in Life Science and Medicine

Toll-free: 1-888-852-8623

Web: www.elabscience.com

Tel: 1-832-243-6086

Email: techsupport@elabscience.com

Fax: 1-832-243-6017

THOC7 Polyclonal Antibody

Catalog Number: E-AB-14720



and interacts with NIF3L1. NIF3L1 BP1 is a component of the THO/TREX complex that is recruited to transcribed genes and travels along with RNA polymerase II (Pol II) during elongation, coupling Pol II with RNA splicing and export factors. The THO/TREX complex also plays a role in the export of Kaposi's sarcoma-associated herpesvirus (KSHV) intronless mRNAs and infectious virus production. The gene that encodes NIF3L1 BP1 maps to human chromosome 3p14.1.

For Research Use Only

A Reliable Research Partner in Life Science and Medicine

Toll-free: 1-888-852-8623

Tel: 1-832-243-6086

Fax: 1-832-243-6017

Web: www.elabscience.com

Email: techsupport@elabscience.com