

ENO4 Polyclonal Antibody

catalog number: E-AB-17910

Note: Centrifuge before opening to ensure complete recovery of vial contents.

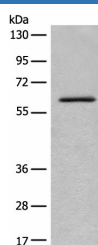
Description

Reactivity	Human;Mouse
Immunogen	Synthetic peptide of human ENO4
Host	Rabbit
Isotype	IgG
Purification	Antigen affinity purification
Conjugation	Unconjugated
buffer	Phosphate buffered solution, pH 7.4, containing 0.05% stabilizer and 50% glycerol.

Applications

Applications	Recommended Dilution
WB	1:500-1:2000
IHC	1:30-1:150

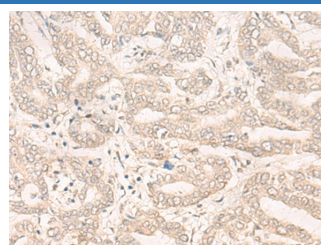
Data



Western blot analysis of Mouse lung tissue lysate using ENO4 Polyclonal Antibody at dilution of 1:450

Observed-MV: Refer to figures

Calculated-MV: 69 kDa



Immunohistochemistry of paraffin-embedded Human liver cancer tissue using ENO4 Polyclonal Antibody at dilution of 1:30 (x200)

Preparation & Storage

Storage	Store at -20°C Valid for 12 months. Avoid freeze / thaw cycles.
Shipping	The product is shipped with ice pack, upon receipt, store it immediately at the temperature recommended.

Background

May be required for sperm motility and function.

For Research Use Only