

## C21orf33 Polyclonal Antibody

catalog number: E-AB-40189

**Note:** Centrifuge before opening to ensure complete recovery of vial contents.

### Description

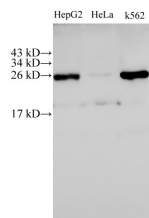
<b>Reactivity</b>	Human
<b>Immunogen</b>	Recombinant Human ES1 protein homolog, mitochondrial protein
<b>Host</b>	Rabbit
<b>Isotype</b>	IgG
<b>Purification</b>	Antigen Affinity Purification
<b>Conjugation</b>	Unconjugated
<b>Buffer</b>	PBS with 0.05% proclin 300, 1% protective protein and 50% glycerol,pH7.4

### Applications

### Recommended Dilution

<b>WB</b>	1:500-1:2000
-----------	--------------

### Data



Western Blot analysis of HepG2, HeLa and K562 cells using  
C21orf33 Polyclonal Antibody at dilution of 1:500

**Observed-MW:25 kDa**

**Calculated-MW:25 kDa**

### Preparation & Storage

<b>Storage</b>	Store at -20°C Valid for 12 months. Avoid freeze / thaw cycles.
<b>Shipping</b>	The product is shipped with ice pack,upon receipt,store it immediately at the temperature recommended.

### Background

This gene encodes a potential mitochondrial protein that is a member of the DJ-1/PfpI gene family. This protein is overexpressed in fetal Down syndrome brain. Alternate splicing results in multiple transcript variants.