

## IGF1 Polyclonal Antibody

catalog number: E-AB-70301

**Note:** Centrifuge before opening to ensure complete recovery of vial contents.

### Description

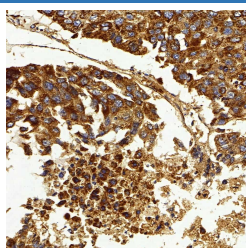
<b>Reactivity</b>	Human
<b>Immunogen</b>	KLH conjugated Synthetic peptide corresponding to Mouse IGF1
<b>Host</b>	Rabbit
<b>Isotype</b>	IgG
<b>Purification</b>	Affinity purification
<b>Conjugation</b>	Unconjugated
<b>Buffer</b>	Phosphate buffered solution, pH 7.4, containing 0.05% stabilizer, 1% protein protectant and 50% glycerol.

### Applications

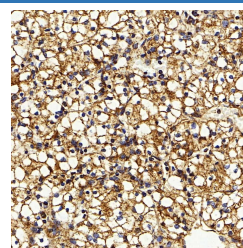
### Recommended Dilution

<b>IHC</b>	1:300-1:1000
------------	--------------

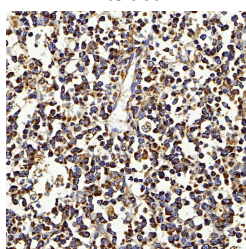
### Data



Immunohistochemistry analysis of paraffin-embedded human liver cancer using IGF1 Polyclonal Antibody at dilution of 1:500.



Immunohistochemistry analysis of paraffin-embedded human kidney cancer using IGF1 Polyclonal Antibody at dilution of 1:500.



Immunohistochemistry analysis of paraffin-embedded human lymph nodes cancer using IGF1 Polyclonal Antibody at dilution of 1:500.

### Preparation & Storage

<b>Storage</b>	Store at -20°C Valid for 12 months. Avoid freeze / thaw cycles.
<b>Shipping</b>	The product is shipped with ice pack, upon receipt, store it immediately at the temperature recommended.

### Background

## For Research Use Only

IGF1, also named as IBP1, MGF, IGF-1A and Somatomedin-C, belongs to the insulin family. IGF1 is structurally and functionally related to insulin but have a much higher growth-promoting activity. Altered expression or mutation of IGF-1 is associated with several human disorders, including type I diabetes and various forms of cancer. Defects in IGF1 are the cause of insulin-like growth factor I deficiency (IGF1 deficiency) which is an autosomal recessive disorder characterized by growth retardation, sensorineural deafness and mental retardation. The antibody is specific to isoform IGF-1A.