

COMMD1 Polyclonal Antibody

catalog number: E-AB-61556

Note: Centrifuge before opening to ensure complete recovery of vial contents.

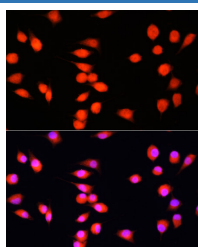
Description

Reactivity	Human;Mouse;Rat
Immunogen	Recombinant fusion protein of human COMMD1 (NP_689729.1).
Host	Rabbit
Isotype	IgG
Purification	Affinity purification
Buffer	Phosphate buffered solution, pH 7.4, containing 0.05% stabilizer and 50% glycerol.

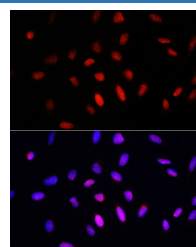
Applications

Applications	Recommended Dilution
IF	1:50-1:100

Data



Immunofluorescence analysis of L929 cells using COMMD1 Polyclonal Antibody at dilution of 1:100. Blue: DAPI for nuclear staining.



Immunofluorescence analysis of U2OS cells using COMMD1 Polyclonal Antibody at dilution of 1:100. Blue: DAPI for nuclear staining.

Preparation & Storage

Storage	Store at -20°C Valid for 12 months. Avoid freeze / thaw cycles.
Shipping	The product is shipped with ice pack, upon receipt, store it immediately at the temperature recommended.

Background

COMMD1 (Copper Metabolism Domain Containing 1) is a Protein Coding gene. Diseases associated with COMMD1 include Wilson Disease and Menkes Disease. Among its related pathways are HIF Repressors and Copper homeostasis. Gene Ontology (GO) annotations related to this gene include protein homodimerization activity and copper ion binding.

For Research Use Only