

Recombinant Mouse TSLP Receptor/CRLF2 Protein (Fc Tag)

Catalog Number: PKSM041158



Note: Centrifuge before opening to ensure complete recovery of vial contents.

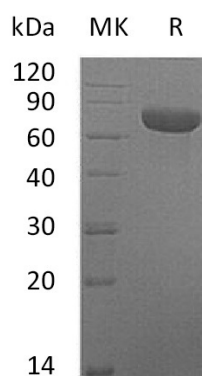
Description

Species	Mouse
Mol_Mass	49.8 kDa
Accession	AAH23788.1
Bio-activity	Not validated for activity

Properties

Purity	> 95 % as determined by reducing SDS-PAGE.
Endotoxin	< 1.0 EU per µg of the protein as determined by the LAL method.
Storage	Generally, lyophilized proteins are stable for up to 12 months when stored at -20 to -80 °C. Reconstituted protein solution can be stored at 4-8°C for 2-7 days. Aliquots of reconstituted samples are stable at < -20°C for 3 months.
Shipping	This product is provided as lyophilized powder which is shipped with ice packs.
Formulation	Lyophilized from a 0.2 µm filtered solution of 20mM PB, 150mM NaCl, pH 7.4. Normally 5% - 8% trehalose, mannitol and 0.01% Tween 80 are added as protectants before lyophilization. Please refer to the specific buffer information in the printed manual.
Reconstitution	Please refer to the printed manual for detailed information.

Data



Background

The cytokine thymic stromal lymphopoietin receptor (TSLPR) is consisting of a common γ receptor-like chain (TSLPR- γ) and a common interleukin 7 (IL-7) $R\alpha$ chain that belongs to the type 1 cytokine receptor family. Transfection of TSLPR cDNA result in only low affinity binding, while cotransfection of the IL-7 $R\alpha$ chain cDNA shows high affinity binding. TSLP and TSLPR play a critical role in the initiation of allergic diseases in mice. The TSLP R cDNA encodes a transmembrane receptor containing 370 amino acids (aa) with two potential N-linked glycosylation sites and a cytoplasmic domain of 104 aa including a single tyrosine residue. TSLPR can mediate signaling of the signal transducer and activator of transcription 5 (Stat5) by TSLP. TSLP R is broadly expressed in the immune and hematopoietic cells, particularly in hematopoietic progenitors and myeloid cells.

For Research Use Only

A Reliable Research Partner in Life Science and Medicine
Tel:400-999-2100

Email:techsupport@elabscience.cn

Web:www.elabscience.cn

Rev. V3.6