

# Recombinant Human CXCL9 Protein (His Tag)

Catalog Number:PKSH032307



**Note:** Centrifuge before opening to ensure complete recovery of vial contents.

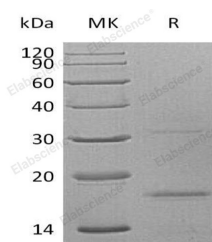
## Description

<b>Synonyms</b>	C-X-C Motif Chemokine 9;Gamma-Interferon-Induced Monokine;Monokine Induced by Interferon-Gamma;HuMIG;MIG;Small-Inducible Cytokine B9;CXCL9;CMK;MIG;SCYB9
<b>Species</b>	Human
<b>Expression Host</b>	HEK293 Cells
<b>Sequence</b>	Thr 23-Thr125
<b>Accession</b>	Q07325
<b>Calculated Molecular Weight</b>	12.8 kDa
<b>Observed molecular weight</b>	16-18 kDa
<b>Tag</b>	C-His

## Properties

<b>Purity</b>	> 95 % as determined by reducing SDS-PAGE.
<b>Endotoxin</b>	< 1.0 EU per µg of the protein as determined by the LAL method.
<b>Storage</b>	Generally, lyophilized proteins are stable for up to 12 months when stored at -20 to -80°C. Reconstituted protein solution can be stored at 4-8°C for 2-7 days. Aliquots of reconstituted samples are stable at < -20°C for 3 months.
<b>Shipping</b>	This product is provided as lyophilized powder which is shipped with ice packs.
<b>Formulation</b>	Lyophilized from a 0.2 µm filtered solution of 20mM PB, 150mM NaCl, pH 7.4. Normally 5 % - 8 % trehalose, mannitol and 0.01% Tween80 are added as protectants before lyophilization. Please refer to the specific buffer information in the printed man
<b>Reconstitution</b>	Please refer to the printed manual for detailed information.

## Data



> 95 % as determined by reducing SDS-PAGE.

## Background

Chemokine (C-X-C Motif) Ligand 9 (CXCL9) belongs to the intercrine alpha (chemokine CXC) family. It is secreted by interferon stimulated monocytes, macrophages and endothelial cells, which elicits chemotactic functions by interacting with the chemokine receptor CXCR3. CXCL9 acts as a Th1 (type 1 helper T) cell chemoattractant and plays a role in the growth, activation and movement of cells associated with immune and inflammatory responses, and in tumour growth inhibition. It is closely related to two other CXC chemokines called CXCL10 and CXCL11, whose genes are located near the gene for CXCL9 on human chromosome 4.

## For Research Use Only

A Reliable Research Partner in Life Science and Medicine

Toll-free: 1-888-852-8623

Web: [www.elabscience.com](http://www.elabscience.com)

Tel: 1-832-243-6086

Email: [techsupport@elabscience.com](mailto:techsupport@elabscience.com)

Fax: 1-832-243-6017