

Flag-Tag Polyclonal Antibody

catalog number: E-AB-40525

Note: Centrifuge before opening to ensure complete recovery of vial contents.

Description

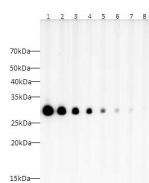
Reactivity	All
Immunogen	Synthetic peptide corresponding to Flag tag conjugated to keyhole limpet haemocyanin.
Host	Rabbit
Isotype	IgG
Purification	Antigen Affinity Purification
Conjugation	Unconjugated
buffer	PBS with 0.05% proclin 300, 1% protective protein and 50% glycerol,pH7.4

Applications

Recommended Dilution

WB	1:10000-1:20000
IP	3ug/sample
IF	1:2000-4000

Data



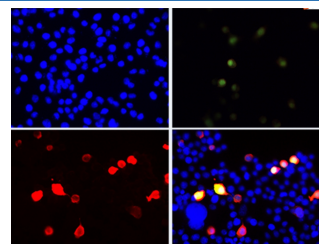
Western blot analysis of 293F cells transfected with Flag tagged recombinant protein at different dilutions. lane 1: 1: 5000, lane 2: 1: 10000, lane 3: 1: 20000, lane 4: 1: 40000, lane 5: 1: 80000, lane 6: 1: 160000, lane 7: 1: 320000, lane 8: 1: 640000

Observed-MV:28 kDa

Calculated-MV:28 kDa



IP Result of 293F cells transfected with FLAG-Tag fusion protein, using anti-FLAG-Tag rabbit antibody. Lane 1:input, lane 2: rabbit IgG Isotype Control, Lane 3: anti-FLAG-Tag rabbit antibody



Immunofluorescent analysis of 293F cells transfected with the FLAG-GFP, using anti-Flag-Tag Polyclonal Antibody at dilution of 1:12000.

Preparation & Storage

Storage	Store at -20°C Valid for 12 months. Avoid freeze / thaw cycles.
Shipping	The product is shipped with ice pack,upon receipt,store it immediately at the temperature recommended.

For Research Use Only

Flag-Tag Polyclonal Antibody

catalog number: E-AB-40525



Background

FLAG-tag is a polypeptide protein tag that can be added to a protein using recombinant DNA technology, having the sequence motif DYKDDDDK. It has been used for studying proteins in living cells and for protein purification by affinity chromatography.

For Research Use Only

A Reliable Research Partner in Life Science and Medicine
Tel: 400-999-2100

Email: techsupport@elabscience.cn

Web: www.elabscience.cn

Rev. V2.4