

PRPF31 Polyclonal Antibody

catalog number: E-AB-61089

Note: *Centrifuge before opening to ensure complete recovery of vial contents.*

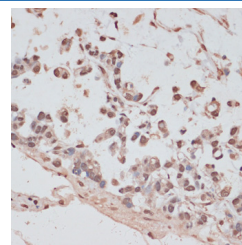
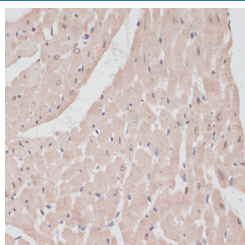
Description

Reactivity	Human;Mouse;Rat
Immunogen	Recombinant fusion protein of human PRPF31 (NP_056444.3).
Host	Rabbit
Isotype	IgG
Purification	Affinity purification
Buffer	Phosphate buffered solution, pH 7.4, containing 0.05% stabilizer and 50% glycerol.

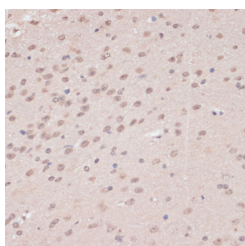
Applications

Applications	Recommended Dilution
IHC	1:50-1:100

Data



Immunohistochemistry of paraffin-embedded Rat heart using PRPF31 Polyclonal Antibody at dilution of 1:100 (40x lens). Immunohistochemistry of paraffin-embedded Human gastric cancer using PRPF31 Polyclonal Antibody at dilution of 1:100 (40x lens).



Immunohistochemistry of paraffin-embedded Mouse brain using PRPF31 Polyclonal Antibody at dilution of 1:100 (40x lens).

Preparation & Storage

Storage	Store at -20°C Valid for 12 months. Avoid freeze / thaw cycles.
Shipping	The product is shipped with ice pack, upon receipt, store it immediately at the temperature recommended.

Background

This gene encodes a component of the spliceosome complex and is one of several retinitis pigmentosa-causing genes. When the gene product is added to the spliceosome complex, activation occurs.

For Research Use Only