

WBP2 Polyclonal Antibody

catalog number: E-AB-91501

Note: Centrifuge before opening to ensure complete recovery of vial contents.

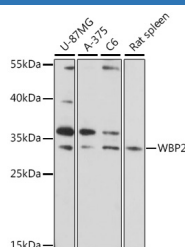
Description

Reactivity	Human;Mouse;Rat
Immunogen	Recombinant fusion protein of human WBP2
Host	Rabbit
Isotype	IgG
Purification	Affinity purification
Buffer	Phosphate buffered solution, pH 7.4, containing 0.05% stabilizer and 50% glycerol.

Applications

WB	1:500-1:2000
-----------	--------------

Data



Western blot analysis of extracts of various cell lines using WBP2 Polyclonal Antibody at 1:1000 dilution.

Observed-MV:28 kDa

Calculated-MV:28 kDa

Preparation & Storage

Storage	Store at -20°C Valid for 12 months. Avoid freeze / thaw cycles.
Shipping	The product is shipped with ice pack, upon receipt, store it immediately at the temperature recommended.

Background

The globular WW domain is composed of 38 to 40 semiconserved amino acids shared by proteins of diverse functions including structural, regulatory, and signaling proteins. The domain is involved in mediating protein-protein interactions through the binding of polypeptide ligands. This gene encodes a WW domain binding protein that is a transcriptional coactivator of estrogen receptor alpha and progesterone receptor. Defects in this gene have been associated with hearing impairment.

For Research Use Only