

## (KO Validated) TMPO Polyclonal Antibody

catalog number: **E-AB-60715**

**Note:** Centrifuge before opening to ensure complete recovery of vial contents.

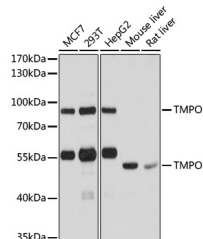
### Description

<b>Reactivity</b>	Human;Mouse;Rat
<b>Immunogen</b>	Recombinant fusion protein of human TMPO (NP_001027454.1).
<b>Host</b>	Rabbit
<b>Isotype</b>	IgG
<b>Purification</b>	Affinity purification
<b>Buffer</b>	Phosphate buffered solution, pH 7.4, containing 0.05% stabilizer and 50% glycerol.

### Applications

Applications	Recommended Dilution
<b>WB</b>	1:500-1:2000
<b>IHC</b>	1:50-1:200
<b>IF</b>	1:50-1:200

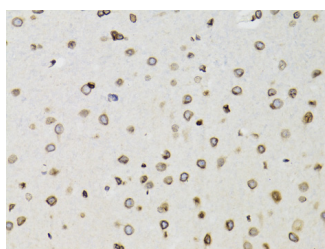
### Data



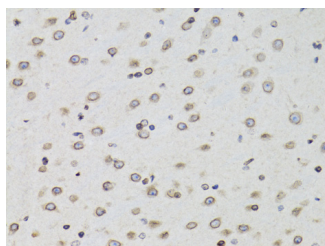
Western blot analysis of extracts of various cell lines using TMPO Polyclonal Antibody at dilution of 1:1000.

**Observed-MW:51 kDa/80 kDa**

**Calculated-MW:38 kDa/50 kDa/75 kDa**



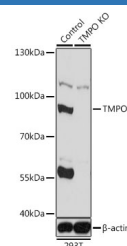
Immunohistochemistry of paraffin-embedded Rat brain using TMPO Polyclonal Antibody at dilution of 1:100 (40x lens).



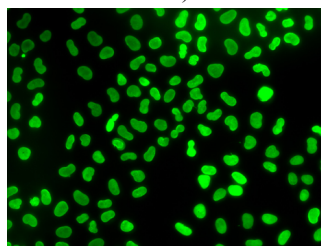
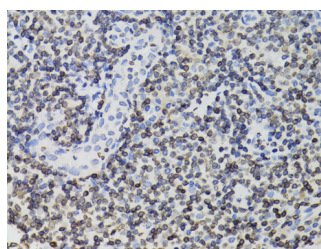
Western blot analysis of extracts from normal (control) and TMPO knockout (KO) 293T cells using TMPO Polyclonal Antibody at dilution of 1:1000.

**Observed-MW:51 kDa/80 kDa**

**Calculated-MW:38 kDa/50 kDa/75 kDa**



Immunohistochemistry of paraffin-embedded Human tonsil using TMPO Polyclonal Antibody at dilution of 1:100 (40x lens).



### For Research Use Only

Immunohistochemistry of paraffin-embedded Mouse brain using TMPO Polyclonal Antibody at dilution of 1:100 (40x lens).

Immunofluorescence analysis of U2OS cells using TMPO Polyclonal Antibody

## Preparation & Storage

**Storage**

Store at -20°C Valid for 12 months. Avoid freeze / thaw cycles.

**Shipping**

The product is shipped with ice pack, upon receipt, store it immediately at the temperature recommended.

## Background

The protein encoded by this gene resides in the nucleus and may play a role in the assembly of the nuclear lamina, and thus help maintain the structural organization of the nuclear envelope. It may function as a receptor for the attachment of lamin filaments to the inner nuclear membrane. Mutations in this gene are associated with dilated cardiomyopathy. Alternatively spliced transcript variants encoding different isoforms have been noted for this gene.

## For Research Use Only