

Carboxypeptidase A1/CPA1 Monoclonal Antibody

catalog number: **AN200106P**

Note: Centrifuge before opening to ensure complete recovery of vial contents.

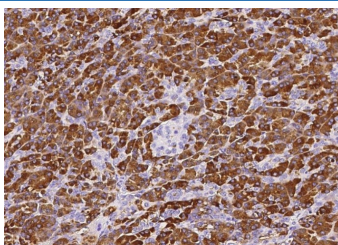
Description

Reactivity	Human
Immunogen	Recombinant Human Carboxypeptidase A1 / CPA1 Protein
Host	Mouse
Isotype	IgG1
Clone	A954
Purification	Protein A
Buffer	0.2 µm filtered solution in PBS

Applications Recommended Dilution

IHC-P	1:50-1:200
--------------	------------

Data



Immunohistochemistry of paraffin-embedded human pancreas using Carboxypeptidase A1 / CPA1 Monoclonal Antibody at dilution of 1:60.

Preparation & Storage

Storage	This antibody can be stored at 2°C-8°C for one month without detectable loss of activity. Antibody products are stable for twelve months from date of receipt when stored at -20°C to -80°C. Preservative-Free. Avoid repeated freeze-thaw cycles.
Shipping	Ice bag

Background

This gene encodes a member of the carboxypeptidase A family of zinc metalloproteases. This enzyme is produced in the pancreas and preferentially cleaves C-terminal branched-chain and aromatic amino acids from dietary proteins. This gene and several family members are present in a gene cluster on chromosome 4. Mutations in this gene may be linked to chronic pancreatitis, while elevated protein levels may be associated with pancreatic cancer.

For Research Use Only