

(KO Validated) PEPCK/PCK2 Polyclonal Antibody

catalog number: E-AB-92385

Note: Centrifuge before opening to ensure complete recovery of vial contents.

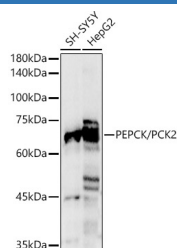
Description

Reactivity	Human;Mouse;Rat
Immunogen	Recombinant fusion protein of human PEPCK/PCK2
Host	Rabbit
Isotype	IgG
Purification	Affinity purification
Buffer	Phosphate buffered solution, pH 7.4, containing 0.05% stabilizer and 50% glycerol.

Applications Recommended Dilution

WB	1:500-1:2000
IHC	1:50-1:200
IF	1:50-1:200
IP	1:50-1:200

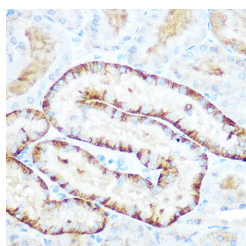
Data



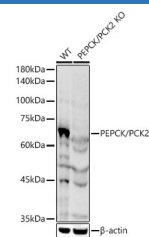
Western blot analysis of various lysates using PEPCK/PCK2 Polyclonal Antibody at 1:1000 dilution.

Observed-MW:71 kDa

Calculated-MW:47 kDa/70 kDa



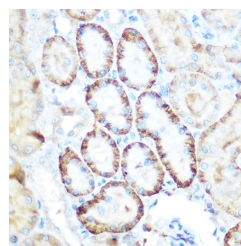
Immunohistochemistry of paraffin-embedded mouse kidney using PEPCK/PEPCK/PCK2 Polyclonal Antibody at dilution of 1:100 (40x lens). Perform microwave antigen retrieval with 10 mM Tris/EDTA buffer pH 9.0 before commencing with IHC staining protocol.



Western blot analysis of extracts from wild type (WT) and PEPCK/PCK2 knockout (KO) 293T cells using PEPCK/PCK2 Polyclonal Antibody at 1:1000 dilution.

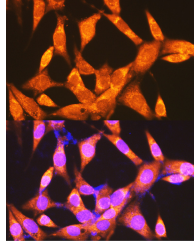
Observed-MW:71 kDa

Calculated-MW:47 kDa/70 kDa

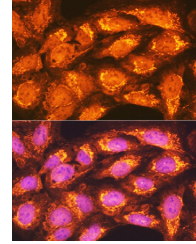


Immunohistochemistry of paraffin-embedded rat kidney using PEPCK/PEPCK/PCK2 Polyclonal Antibody at dilution of 1:100 (40x lens). Perform microwave antigen retrieval with 10 mM Tris/EDTA buffer pH 9.0 before commencing with IHC staining protocol.

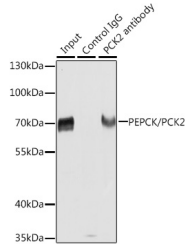
For Research Use Only



Immunofluorescence analysis of NIH-3T3 cells using PEPCK/PEPCK/PCK2 Polyclonal Antibody at dilution of 1:100 (40x lens). Blue: DAPI for nuclear staining.



Immunofluorescence analysis of U2OS cells using PEPCK/PEPCK/PCK2 Polyclonal Antibody at dilution of 1:100 (40x lens). Blue: DAPI for nuclear staining.



Immunoprecipitation analysis of extracts of HepG2 cells using PEPCK/PEPCK/PCK2 Polyclonal Antibody. Western blot was performed from the immunoprecipitate using PEPCK/PEPCK/PCK2 Polyclonal Antibody at a dilution of 1:1000.

Observed-MW:71 kDa

Calculated-MW:47 kDa/70 kDa

Preparation & Storage

Storage

Store at -20°C Valid for 12 months. Avoid freeze / thaw cycles.

Shipping

The product is shipped with ice pack, upon receipt, store it immediately at the temperature recommended.

Background

This gene encodes a mitochondrial enzyme that catalyzes the conversion of oxaloacetate to phosphoenolpyruvate in the presence of guanosine triphosphate (GTP). A cytosolic form of this protein is encoded by a different gene and is the key enzyme of gluconeogenesis in the liver. Alternatively spliced transcript variants have been described.

For Research Use Only