

## Recombinant Human IL15RA/IL-15RA Protein (Fc Tag)

**Catalog Number:** PKSH032566

**Note:** Centrifuge before opening to ensure complete recovery of vial contents.

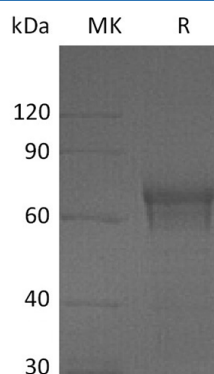
### Description

<b>Species</b>	Human
<b>Source</b>	HEK293 Cells-derived Human IL15RA;IL-15RA protein Ile31-Thr172, with an C-terminal Fc
<b>Calculated MW</b>	42.0 kDa
<b>Observed MW</b>	60-75 kDa
<b>Accession</b>	Q13261-3
<b>Bio-activity</b>	Measured by its ability to block human IL-15-induced proliferation of CTLL- 2 mouse cytotoxic T cells. The ED <sub>50</sub> for this effect is 0.35-3.5 ng/ml.

### Properties

<b>Purity</b>	> 95 % as determined by reducing SDS-PAGE.
<b>Endotoxin</b>	< 1.0 EU per µg of the protein as determined by the LAL method.
<b>Storage</b>	Generally, lyophilized proteins are stable for up to 12 months when stored at -20 to -80 °C. Reconstituted protein solution can be stored at 4-8°C for 2-7 days. Aliquots of reconstituted samples are stable at < -20°C for 3 months.
<b>Shipping</b>	This product is provided as lyophilized powder which is shipped with ice packs.
<b>Formulation</b>	Lyophilized from a 0.2 µm filtered solution of 20mM PB, 150mM NaCl, pH 7.4. Normally 5% - 8% trehalose, mannitol and 0.01% Tween 80 are added as protectants before lyophilization.
	Please refer to the specific buffer information in the printed manual.
<b>Reconstitution</b>	Please refer to the printed manual for detailed information.

### Data



> 95 % as determined by reducing SDS-PAGE.

### Background

Interleukin 15 Receptor alpha (IL-15Rα) is a transmembrane glycoprotein that plays a pleiotropic role in immune development and function, including the positive maintenance of lymphocyte homeostasis. IL-15Rα chain can bind soluble IL-15 and “transpresent” cytokine to the cells, allowing them to respond to IL-15. Soluble IL-15Rα can function as a specific high-affinity IL-15 antagonist. The soluble IL-15/IL-15Rα complexes exhibit a strong agonistic activity which is mediated through membrane-bound IL-15 receptor β and γ heterodimers and enables signaling to cells.

### For Research Use Only