

CK-7 Polyclonal Antibody

catalog number: **D-AB-10175L**

Note: Centrifuge before opening to ensure complete recovery of vial contents.

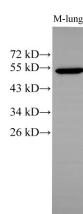
Description

| | |
|---------------------|--|
| Reactivity | Human;Mouse |
| Immunogen | Recombinant Mouse Krt7 protein expressed by E.coli |
| Host | Rabbit |
| Isotype | IgG |
| Purification | Antigen Affinity Purification |
| Buffer | PBS with 0.05% Proclin300, 1% protective protein and 50% glycerol, pH7.4 |

Applications Recommended Dilution

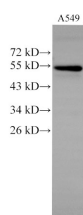
| | |
|------------|--------------|
| WB | 1:500-1:2000 |
| IHC | 1:250-1:500 |

Data



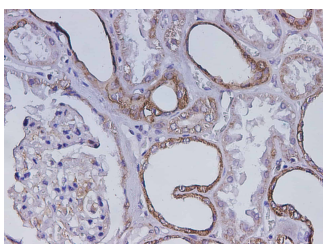
Western Blot analysis of Mouse lung using CK-7 Polyclonal Antibody at dilution of 1:500

Observed-MW:51 kDa
Calculated-MW:51 kDa

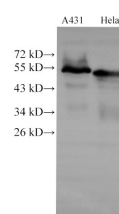


Western Blot analysis of A549 cells using CK-7 Polyclonal Antibody at dilution of 1:2000

Observed-MW:51 kDa
Calculated-MW:51 kDa

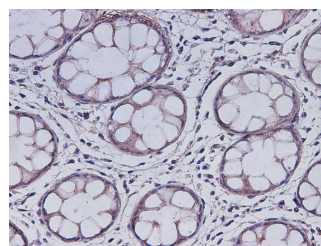


Immunohistochemistry of paraffin-embedded Mouse kidney using Krt7 Polyclonal Antibody at dilution of 1:500



Western Blot analysis of A431 and HeLa cells using CK-7 Polyclonal Antibody at dilution of 1:2000

Observed-MW:51 kDa
Calculated-MW:51 kDa



Immunohistochemistry of paraffin-embedded Mouse colon using Krt7 Polyclonal Antibody at dilution of 1:500

For Research Use Only

Preparation & Storage

Storage

Store at -20°C Valid for 12 months. Avoid freeze / thaw cycles.

Shipping

The product is shipped with ice pack, upon receipt, store it immediately at the temperature recommended.

Background

Keratins are a large family of proteins that form the intermediate filament cytoskeleton of epithelial cells, which are classified into two major sequence types. Type I keratins are a group of acidic intermediate filament proteins, including K9–K23, and the hair keratins Ha1–Ha8. Type II keratins are the basic or neutral counterparts to the acidic type I keratins, including K1–K8, and the hair keratins, Hb1–Hb6. KRT7, also named as cytokeratin 7, is one member of type II basic cytokeratin. It is specifically expressed in the simple epithelia lining the cavities of the internal organs and in the gland ducts and blood vessels, and their neoplasms. KRT7 is marker of epithelial tissues, but not present in carcinomas of stratified squamous cell origin. This antibody is specifically against KRT7.

For Research Use Only

Toll-free: 1-888-852-8623

Web: www.elabscience.com

Tel: 1-832-243-6086

Email: techsupport@elabscience.com

Fax: 1-832-243-6017

Rev. V2.1